

Use Case Model

Table of Contents

Use Case Model	4
Overview	4
Actors	5
Human Actors	5
Human Actors	5
<u>Mail Room Worker</u>	5
<u>Office-Based Staff Member</u>	5
<u>Remote Staff Member</u>	5
<u>Software Configurer</u>	6
<u>Staff Member</u>	6
<u>System Administrator</u>	6
System Actors	6
System Actors	6
<u>External Email Gateway</u>	7
<u>Fax Gateway</u>	7
<u>SMS Gateway</u>	7
<u>Telephone Gateway</u>	7
<u>Voice Gateway</u>	7
Use Cases	7
Contact and Address Book	7
Contact and Address Book	7
<u>Choose Recipient</u>	8
<u>Manage Contacts</u>	8
Messaging	9
Compose Message	9
Compose Message	9
<u>Note</u>	10
<u>Note</u>	10
<u>Check Spelling and Grammar</u>	11
<u>Compose Message</u>	11
<u>Create and display blank message</u>	12
<u>Display list of contacts from address book</u>	12
<u>Enter message body</u>	12
<u>Enter message subject</u>	12
<u>Save message</u>	12
<u>Select "Create Message"</u>	12
<u>Select address book</u>	12
<u>Select recipients</u>	12
<u>Decrypt Message</u>	13
<u>Encrypt Message</u>	13
<u>Read Message</u>	14
<u>Send External Email</u>	14
<u>Send Fax</u>	14
<u>Send Internal Email</u>	14
<u>Send Letter</u>	14
<u>Send Message</u>	14
<u>Check mandatory data</u>	15
<u>Display list of contacts from address book</u>	15
<u>Enter missing data</u>	15
<u>Get delivery methods</u>	16
<u>Inform user of missing mandatory data</u>	16
<u>Read delivery failure message</u>	16
<u>Receive delivery failure message</u>	16
<u>Select address book</u>	16
<u>Select message from list</u>	16
<u>Select recipients</u>	16
<u>Send delivery failure message to Staff Member</u>	17
<u>Send message via appropriate delivery methods</u>	17
<u>Send message</u>	17
<u>Delivery Failure</u>	18
<u>Delivery Successful</u>	18

- System Down 18
- Send SMS..... 18
- System Management 18
 - System Management 18
 - Configure System 19
 - Install System 19
 - Manage System Events..... 19
 - Optimize System 20
 - Uninstall System..... 20

Use Case Model

Overview

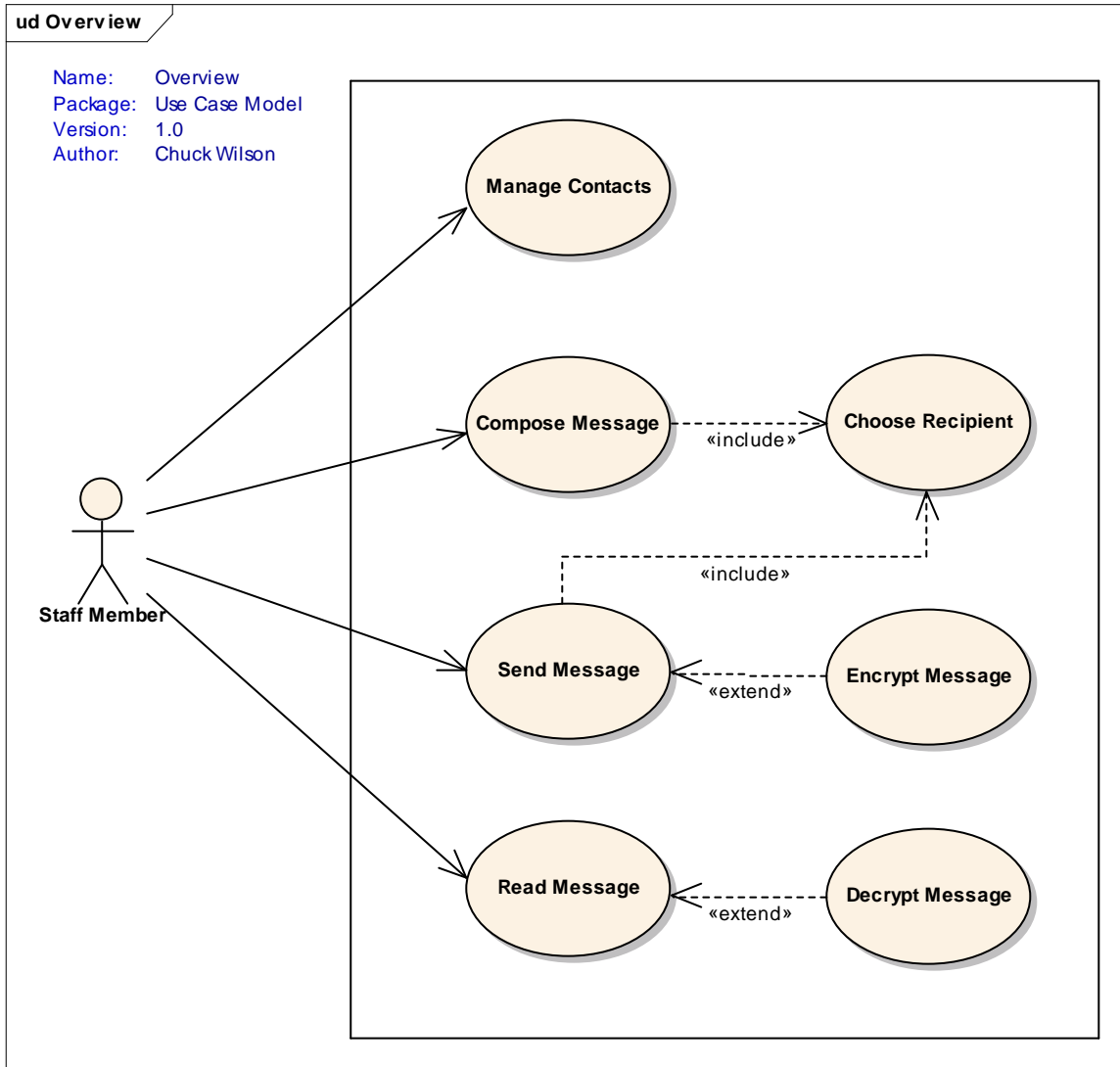


Figure 1: Overview

Type: Public, **Boundary**
Status: Proposed, Version 1.0, Phase 1.0
Package: Use Case Model
Details: Created on: 20/02/2003, Modified on: 24/02/2003, Author: Chuck Wilson

Actors

Human Actors

Human Actors

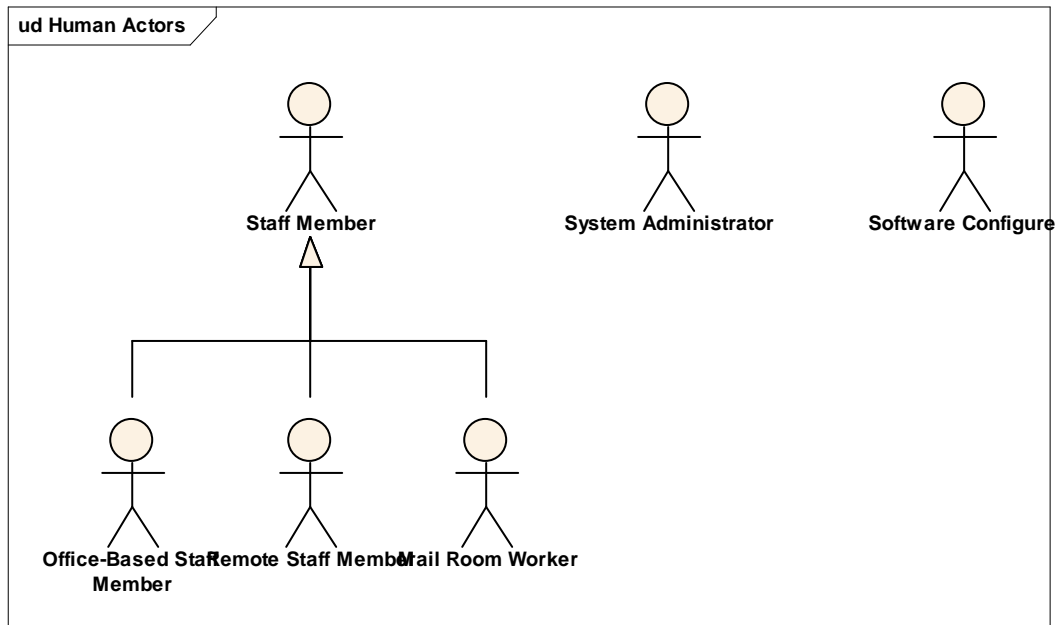


Figure 2: Human Actors

[Mail Room Worker](#)

Type: Public, **Actor**
Status: Proposed, Version 1.0, Phase 1.0
Package: Human Actors
Details: Created on: 6/05/2003, Modified on: 13/06/2003, Author: Chuck Wilson

The Mail Room Worker is a Staff Member working in the mailroom. They have particular important to the system because they need to update the system when mail arrives or leaves the mailroom. It is this worker that effectively bridges the gap between the electronic and manual parts of the system.

[Office-Based Staff Member](#)

Type: Public, **Actor**
Status: Proposed, Version 1.0, Phase 1.0
Package: Human Actors
Details: Created on: 19/02/2003, Modified on: 13/06/2003, Author: Chuck Wilson

This is an Actor who is based in the office and will access the system through the LAN.

[Remote Staff Member](#)

Type: Public, **Actor**
Status: Proposed, Version 1.0, Phase 1.0
Package: Human Actors
Details: Created on: 19/02/2003, Modified on: 13/06/2003, Author: Chuck Wilson

The CEO has issued a security warning in conjunction with the Security Officer. Unless there is direct permission granted by the security department no staff member should be able access the system externally, except those given this express permission.

Software Configurer

Type: Public, **Actor**
Status: Proposed, Version 1.0, Phase 1.0
Package: Human Actors
Details: Created on: 19/02/2003, Modified on: 2/06/2003, Author: Chuck Wilson

Staff Member

Type: Public, **Actor**
Status: Proposed, Version 1.0, Phase 1.0
Package: Human Actors
Details: Created on: 19/02/2003, Modified on: 27/08/2003, Author: Chuck Wilson

The Staff Member actor is a role played by almost every individual in the organization. It represents anyone who has been given an account with the messenger system. It is important to note that contractors or visiting personnel will typically given an account and will therefore be considered Staff Members for the duration of their contract or visit.

System Administrator

Type: Public, **Actor**
Status: Proposed, Version 1.0, Phase 1.0
Package: Human Actors
Details: Created on: 19/02/2003, Modified on: 4/06/2003, Author: Chuck Wilson

System Actors

System Actors

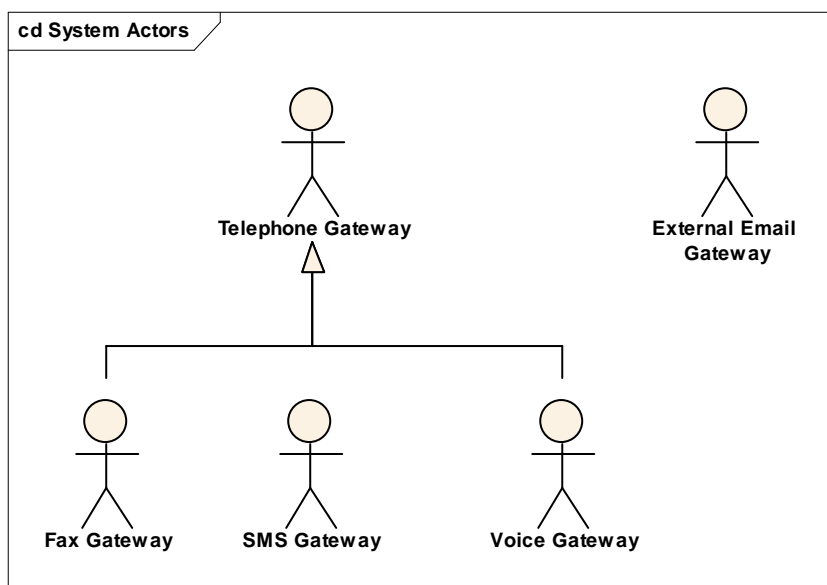


Figure 3: System Actors

External Email Gateway

Type: Public, **Actor**
Status: Proposed, Version 1.0, Phase 1.0
Package: System Actors
Details: Created on: 19/02/2003, Modified on: 4/06/2003, Author: Chuck Wilson

Fax Gateway

Type: Public, **Actor**
Status: Proposed, Version 1.0, Phase 1.0
Package: System Actors
Details: Created on: 6/05/2003, Modified on: 4/06/2003, Author: Chuck Wilson

SMS Gateway

Type: Public, **Actor**
Status: Proposed, Version 1.0, Phase 1.0
Package: System Actors
Details: Created on: 19/02/2003, Modified on: 4/06/2003, Author: Chuck Wilson

Telephone Gateway

Type: Public, **Actor**
Status: Proposed, Version 1.0, Phase 1.0
Package: System Actors
Details: Created on: 19/02/2003, Modified on: 4/06/2003, Author: Chuck Wilson

Fax Gateway

Voice Gateway

Type: Public, **Actor**
Status: Proposed, Version 1.0, Phase 1.0
Package: System Actors
Details: Created on: 6/05/2003, Modified on: 4/06/2003, Author: Chuck Wilson

Use Cases

Contact and Address Book

Contact and Address Book

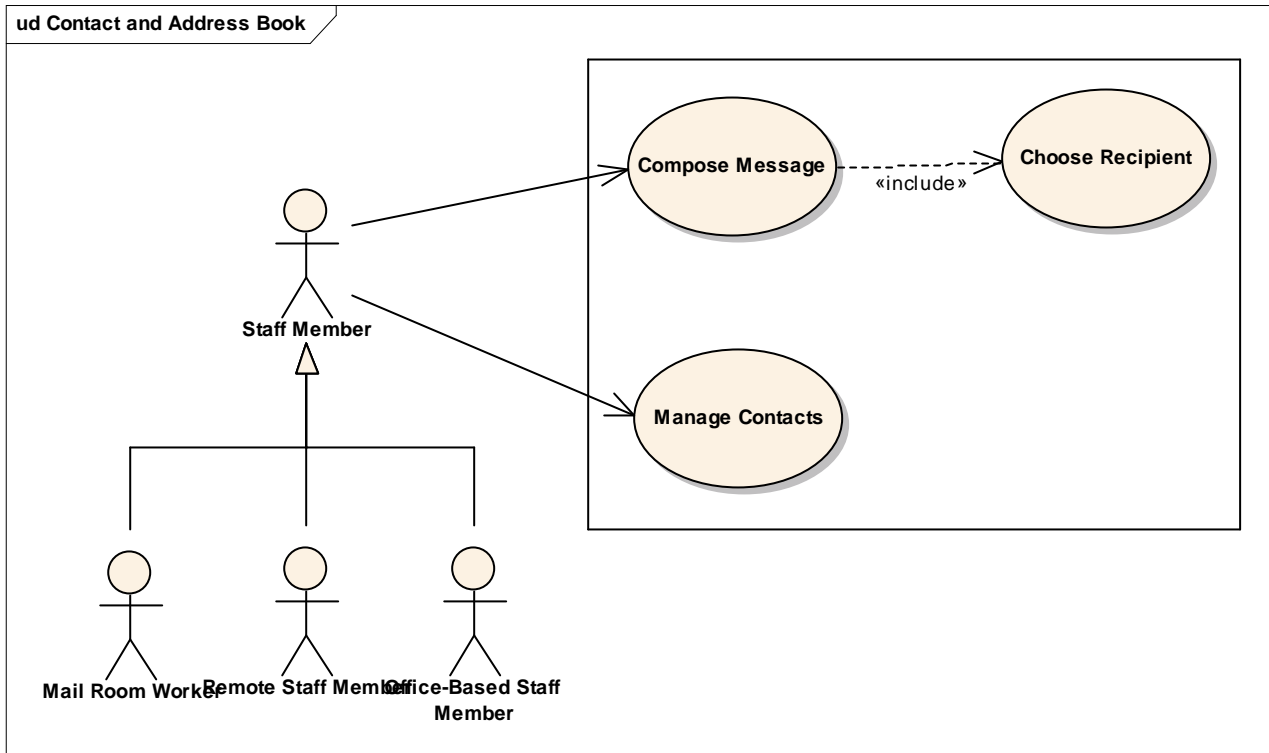


Figure 4: Contact and Address Book

Type: Public, **Boundary**
Status: Proposed, Version 1.0, Phase 1.0
Package: Contact and Address Book
Details: Created on: 13/06/2003, Modified on: 13/06/2003, Author: Chuck Wilson

Choose Recipient

Type: Public, **UseCase**
Status: Proposed, Version 1.0, Phase 1.0
Package: Contact and Address Book
Details: Created on: 19/02/2003, Modified on: 13/06/2003, Author: Chuck Wilson

This use case details the process by which contacts are selected from the address book for the purposes of having a message sent to them.

Manage Contacts

Type: Public, **UseCase**
Status: Proposed, Version 1.0, Phase 1.0
Package: Contact and Address Book
Details: Created on: 20/02/2003, Modified on: 13/06/2003, Author: Chuck Wilson

The Manage Contacts use case describes all aspect of the way that the actors manage the people and parties they have listed in their address book. Actors will be able to create, update, and delete contacts in any address book they have permission to access. They will also be able create, update and delete groups and add and remove allowing them to effectively reclassify contacts and groups within other groups. The notion is that actors should have complete flexibility to manage their contact as they wish.

Messaging

Compose Message

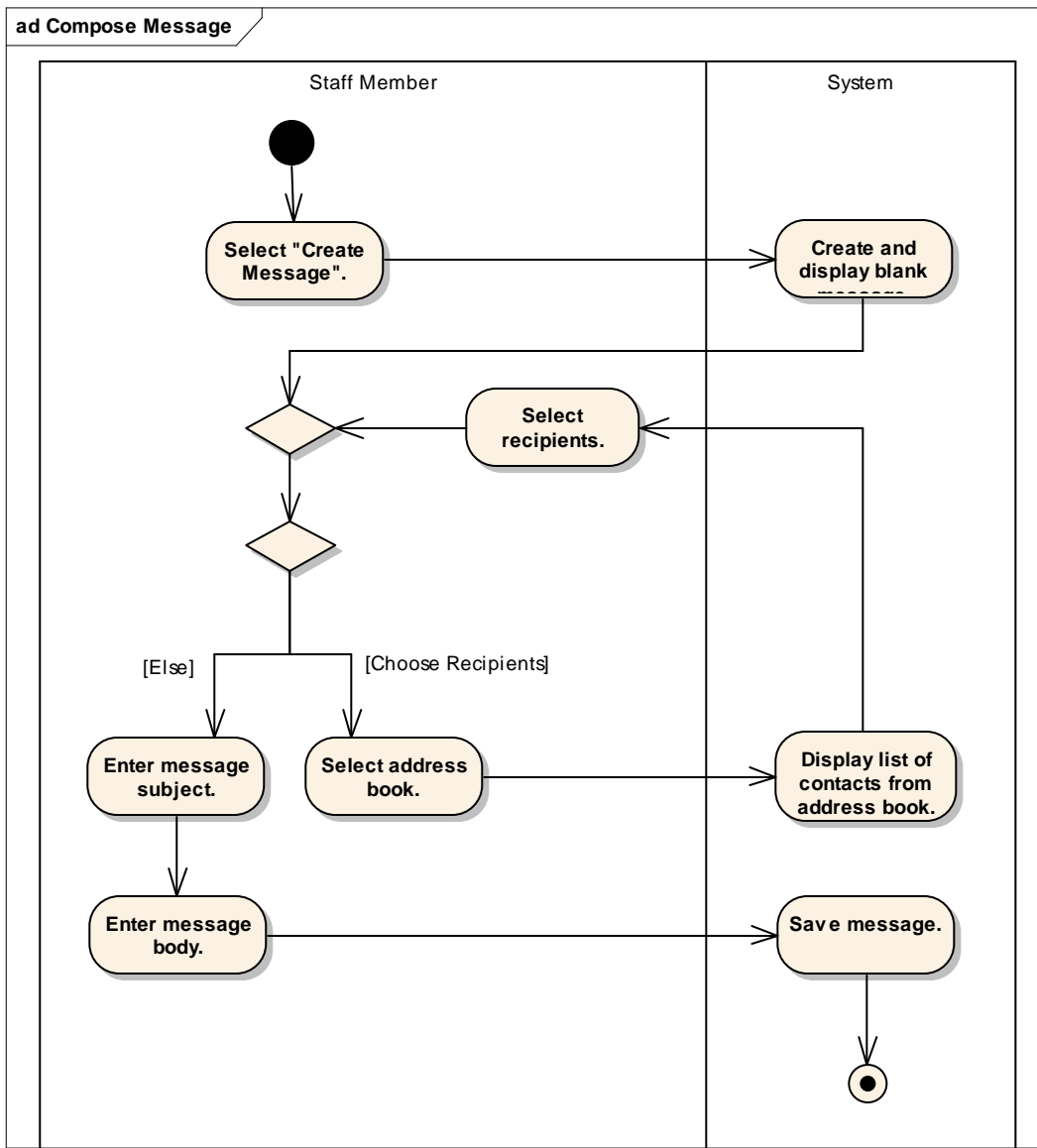


Figure 5: Compose Message

Compose Message

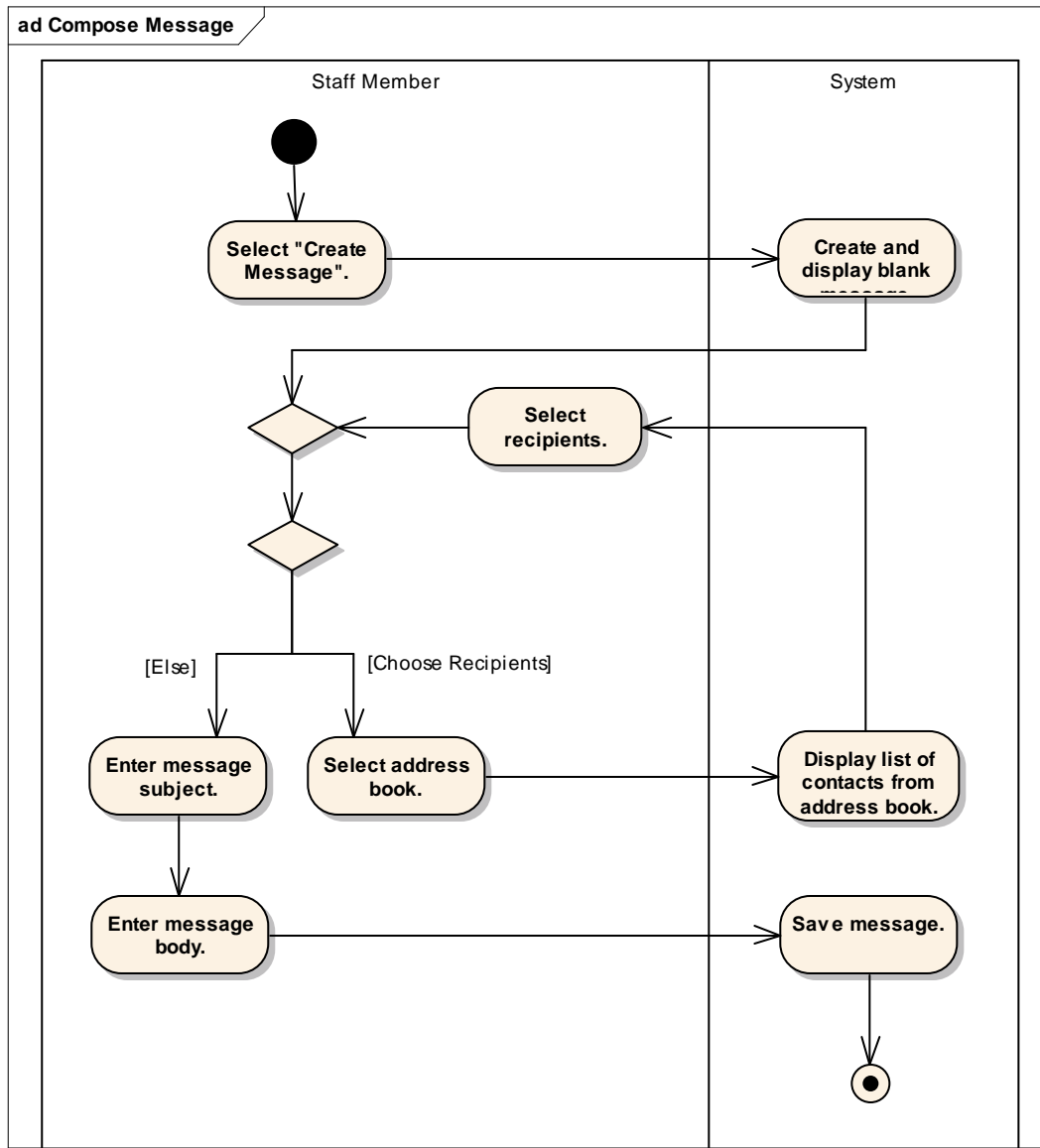


Figure 6: Compose Message

Note

Type: Public, **Note**
 Status: Proposed, Version 1.0, Phase 1.0
 Package: Messaging
 Details: Created on: 11/06/2003, Modified on: 11/06/2003, Author: Chuck Wilson

Remote staff members are considered separately because of the security implications.

Note

Type: Public, **Note**
 Status: Proposed, Version 1.0, Phase 1.0
 Package: Messaging
 Details: Created on: 20/05/2003, Modified on: 20/05/2003, Author:

Generally the message would just have been created and as such the message would already be selected.

[Check Spelling and Grammar](#)

Type: Public, **UseCase**
Status: Proposed, Version 1.0, Phase 1.0
Package: Messaging
Details: Created on: 5/05/2003, Modified on: 4/06/2003, Author: Chuck Wilson

[Compose Message](#)

Type: Public, **UseCase**
Status: Proposed, Version 1.0, Phase 1.0
Package: Messaging
Details: Created on: 19/02/2003, Modified on: 13/06/2003, Author: Chuck Wilson

The Compose Message use case defines all aspects of the creation of messages such as the selection of message recipients and the writing of message contents and the inclusion of attachments to the message. Note that the delivery mechanism used to deliver the message is not determined at this stage but is determined by the preferences of the recipient when the message is sent. Once a message is composed it can be saved or sent (these are defined in other use cases)

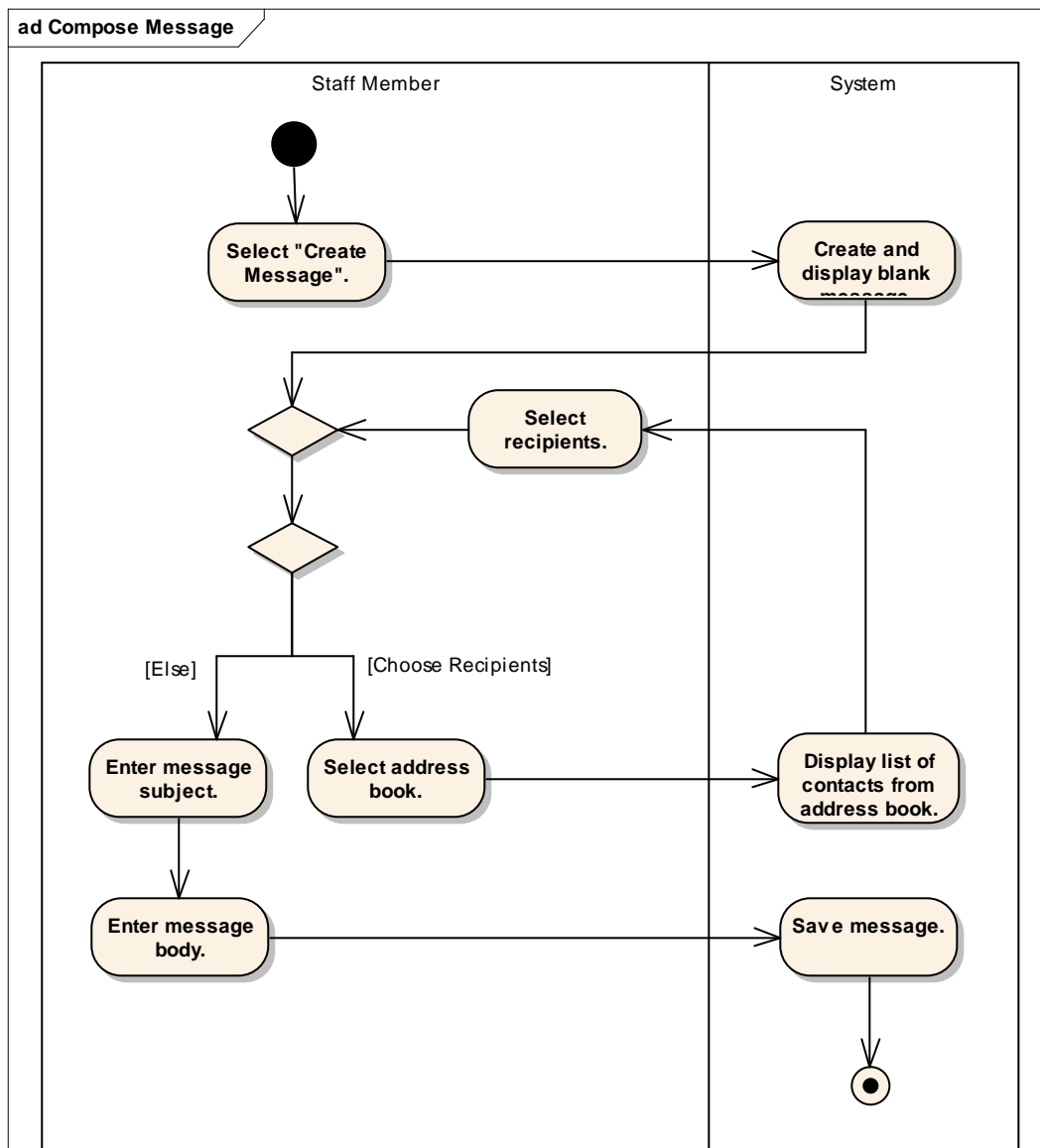


Figure 7: Compose Message

[Create and display blank message.](#)

Type: Public, **Activity**
Status: Proposed, Version 1.0, Phase 1.0
Package: Compose Message
Details: Created on: 19/05/2003, Modified on: 20/05/2003, Author:

[Display list of contacts from address book.](#)

Type: Public, **Activity**
Status: Proposed, Version 1.0, Phase 1.0
Package: Compose Message
Details: Created on: 20/05/2003, Modified on: 12/06/2003, Author:

[Enter message body.](#)

Type: Public, **Activity**
Status: Proposed, Version 1.0, Phase 1.0
Package: Compose Message
Details: Created on: 19/05/2003, Modified on: 12/06/2003, Author:

[Enter message subject.](#)

Type: Public, **Activity**
Status: Proposed, Version 1.0, Phase 1.0
Package: Compose Message
Details: Created on: 19/05/2003, Modified on: 12/06/2003, Author:

[Save message.](#)

Type: Public, **Activity**
Status: Proposed, Version 1.0, Phase 1.0
Package: Compose Message
Details: Created on: 19/05/2003, Modified on: 12/06/2003, Author:

[Select "Create Message".](#)

Type: Public, **Activity**
Status: Proposed, Version 1.0, Phase 1.0
Package: Compose Message
Details: Created on: 19/05/2003, Modified on: 20/05/2003, Author:

[Select address book.](#)

Type: Public, **Activity**
Status: Proposed, Version 1.0, Phase 1.0
Package: Compose Message
Details: Created on: 19/05/2003, Modified on: 12/06/2003, Author:

[Select recipients.](#)

Type: Public, **Activity**
Status: Proposed, Version 1.0, Phase 1.0

Package: Compose Message
Details: Created on: 20/05/2003, Modified on: 12/06/2003, Author:

Type: *Public, **Decision***
Status: Proposed, Version 1.0, Phase 1.0
Package: Compose Message
Details: Created on: 20/05/2003, Modified on: 12/06/2003, Author:

Type: *Public, **Decision***
Status: Proposed, Version 1.0, Phase 1.0
Package: Compose Message
Details: Created on: 20/05/2003, Modified on: 20/05/2003, Author:

Type: *Public, **Decision***
Status: Proposed, Version 1.0, Phase 1.0
Package: Compose Message
Details: Created on: 12/06/2003, Modified on: 12/06/2003, Author: Chuck Wilson

Type: *Public, **StateNode***
Status: Proposed, Version 1.0, Phase 1.0
Package: Compose Message
Details: Created on: 19/05/2003, Modified on: 20/05/2003, Author:

Type: *Public, **StateNode***
Status: Proposed, Version 1.0, Phase 1.0
Package: Compose Message
Details: Created on: 19/05/2003, Modified on: 12/06/2003, Author:

Decrypt Message

Type: *Public, **UseCase***
Status: Proposed, Version 1.0, Phase 1.0
Package: Messaging
Details: Created on: 20/02/2003, Modified on: 4/06/2003, Author: Chuck Wilson

Encrypt Message

Type: *Public, **UseCase***
Status: Proposed, Version 1.0, Phase 1.0
Package: Messaging
Details: Created on: 19/02/2003, Modified on: 4/06/2003, Author: Chuck Wilson

[Read Message](#)

Type: Public, **UseCase**
Status: Proposed, Version 1.0, Phase 1.0
Package: Messaging
Details: Created on: 20/02/2003, Modified on: 4/06/2003, Author: Chuck Wilson

[Send External Email](#)

Type: Public, **UseCase**
Status: Proposed, Version 1.0, Phase 1.0
Package: Messaging
Details: Created on: 19/02/2003, Modified on: 4/06/2003, Author: Chuck Wilson

[Send Fax](#)

Type: Public, **UseCase**
Status: Proposed, Version 1.0, Phase 1.0
Package: Messaging
Details: Created on: 19/02/2003, Modified on: 4/06/2003, Author: Chuck Wilson

[Send Internal Email](#)

Type: Public, **UseCase**
Status: Proposed, Version 1.0, Phase 1.0
Package: Messaging
Details: Created on: 19/02/2003, Modified on: 4/06/2003, Author: Chuck Wilson

[Send Letter](#)

Type: Public, **UseCase**
Status: Proposed, Version 1.0, Phase 1.0
Package: Messaging
Details: Created on: 19/02/2003, Modified on: 4/06/2003, Author: Chuck Wilson

[Send Message](#)

Type: Public, **UseCase**
Status: Proposed, Version 1.0, Phase 1.0
Package: Messaging
Details: Created on: 19/02/2003, Modified on: 4/06/2003, Author: Chuck Wilson

This use case deals with sending of messages after they have been created. It describes the process by which message is checked for completeness and sent via the appropriate delivery mechanism or mechanisms.

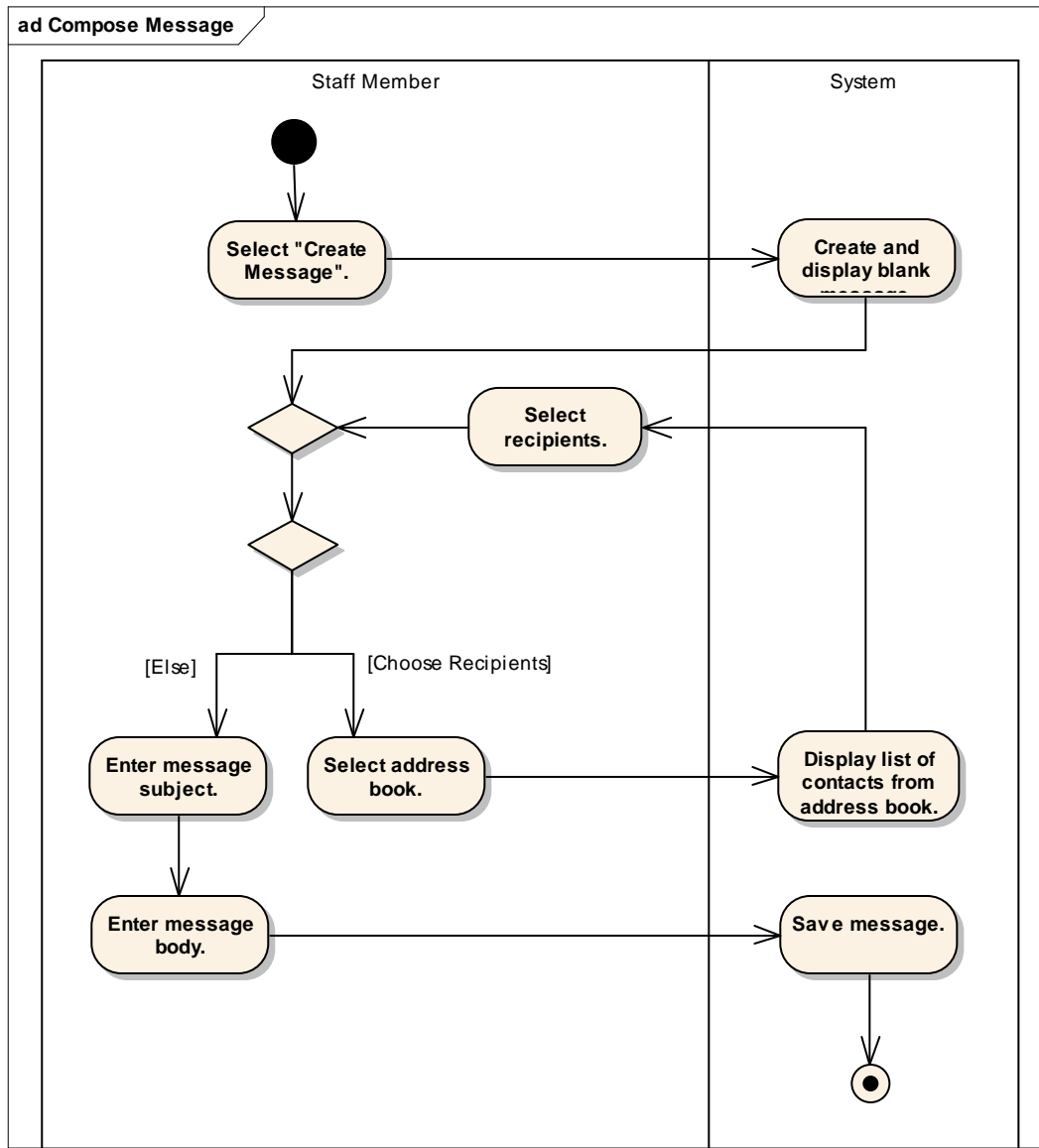


Figure 8: Compose Message

[Check mandatory data.](#)

Type: Public, **Activity**
 Status: Proposed, Version 1.0, Phase 1.0
 Package: Send Message
 Details: Created on: 19/05/2003, Modified on: 20/05/2003, Author:

[Display list of contacts from address book.](#)

Type: Public, **Activity**
 Status: Proposed, Version 1.0, Phase 1.0
 Package: Send Message
 Details: Created on: 20/05/2003, Modified on: 20/05/2003, Author:

[Enter missing data.](#)

Type: Public, **Activity**
 Status: Proposed, Version 1.0, Phase 1.0
 Package: Send Message

Details: Created on: 19/05/2003, Modified on: 20/05/2003, Author:

Get delivery methods.

Type: Public, **Activity**
Status: Proposed, Version 1.0, Phase 1.0
Package: Send Message
Details: Created on: 19/05/2003, Modified on: 20/05/2003, Author:

Inform user of missing mandatory data.

Type: Public, **Activity**
Status: Proposed, Version 1.0, Phase 1.0
Package: Send Message
Details: Created on: 19/05/2003, Modified on: 20/05/2003, Author:

Read delivery failure message.

Type: Public, **Activity**
Status: Proposed, Version 1.0, Phase 1.0
Package: Send Message
Details: Created on: 20/05/2003, Modified on: 20/05/2003, Author:

Receive delivery failure message.

Type: Public, **Activity**
Status: Proposed, Version 1.0, Phase 1.0
Package: Send Message
Details: Created on: 20/05/2003, Modified on: 20/05/2003, Author:

Select address book.

Type: Public, **Activity**
Status: Proposed, Version 1.0, Phase 1.0
Package: Send Message
Details: Created on: 20/05/2003, Modified on: 20/05/2003, Author:

Select message from list.

Type: Public, **Activity**
Status: Proposed, Version 1.0, Phase 1.0
Package: Send Message
Details: Created on: 19/05/2003, Modified on: 12/06/2003, Author:

Select recipients.

Type: Public, **Activity**
Status: Proposed, Version 1.0, Phase 1.0
Package: Send Message
Details: Created on: 20/05/2003, Modified on: 12/06/2003, Author:

[Send delivery failure message to Staff Member.](#)

Type: Public, **Activity**
Status: Proposed, Version 1.0, Phase 1.0
Package: Send Message
Details: Created on: 19/05/2003, Modified on: 20/05/2003, Author:

[Send message via appropriate delivery methods.](#)

Type: Public, **Activity**
Status: Proposed, Version 1.0, Phase 1.0
Package: Send Message
Details: Created on: 19/05/2003, Modified on: 20/05/2003, Author:

[Send message.](#)

Type: Public, **Activity**
Status: Proposed, Version 1.0, Phase 1.0
Package: Send Message
Details: Created on: 19/05/2003, Modified on: 20/05/2003, Author:

Type: Public, **Decision**
Status: Proposed, Version 1.0, Phase 1.0
Package: Send Message
Details: Created on: 19/05/2003, Modified on: 20/05/2003, Author:

Type: Public, **Decision**
Status: Proposed, Version 1.0, Phase 1.0
Package: Send Message
Details: Created on: 20/05/2003, Modified on: 20/05/2003, Author:

Type: Public, **Decision**
Status: Proposed, Version 1.0, Phase 1.0
Package: Send Message
Details: Created on: 12/06/2003, Modified on: 12/06/2003, Author: Chuck Wilson

Type: Public, **Object**
Status: Proposed, Version 1.0, Phase 1.0
Package: Send Message
Details: Created on: 20/05/2003, Modified on: 20/05/2003, Author:

Type: Public, **StateNode**
Status: Proposed, Version 1.0, Phase 1.0

Package: Send Message
Details: Created on: 19/05/2003, Modified on: 12/06/2003, Author:

Delivery Failure

Type: Public, **StateNode**
Status: Proposed, Version 1.0, Phase 1.0
Package: Send Message
Details: Created on: 20/05/2003, Modified on: 20/05/2003, Author:

Delivery Successful

Type: Public, **StateNode**
Status: Proposed, Version 1.0, Phase 1.0
Package: Send Message
Details: Created on: 19/05/2003, Modified on: 20/05/2003, Author:

System Down

Type: Public, **StateNode**
Status: Proposed, Version 1.0, Phase 1.0
Package: Send Message
Details: Created on: 20/05/2003, Modified on: 20/05/2003, Author:

Send SMS

Type: Public, **UseCase**
Status: Proposed, Version 1.0, Phase 1.0
Package: Messaging
Details: Created on: 19/02/2003, Modified on: 4/06/2003, Author: Chuck Wilson

System Management

System Management

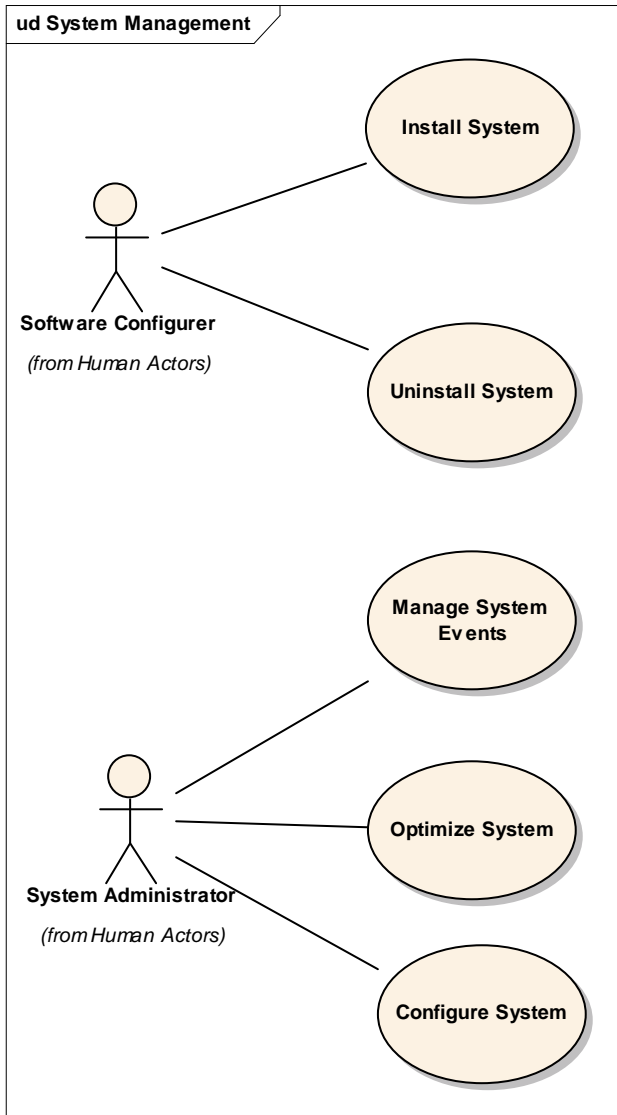


Figure 9: System Management

[Configure System](#)

Type: Public, **UseCase**
Status: Proposed, Version 1.0, Phase 1.0
Package: System Management
Details: Created on: 5/05/2003, Modified on: 13/05/2003, Author: Chuck Wilson

The system needs to be running optimally and there will be a number of things that may slow the system down over time these may need to be configured over time to ensure efficiency.

[Install System](#)

Type: Public, **UseCase**
Status: Proposed, Version 1.0, Phase 1.0
Package: System Management
Details: Created on: 5/05/2003, Modified on: 13/05/2003, Author: Chuck Wilson

[Manage System Events](#)

Type: Public, **UseCase**

Status: Proposed, Version 1.0, Phase 1.0
Package: System Management
Details: Created on: 5/05/2003, Modified on: 13/05/2003, Author: Chuck Wilson

In the event of system failure there will be a need to analyze the fault and determine any action that needs to be carried out. This will involve the ability to view where, when and how the error occurred, what the impact of the fault is and the implementation of any corrective action such as restarting the system.

Optimize System

Type: *Public, UseCase*
Status: Proposed, Version 1.0, Phase 1.0
Package: System Management
Details: Created on: 5/05/2003, Modified on: 13/05/2003, Author: Chuck Wilson

Uninstall System

Type: *Public, UseCase*
Status: Proposed, Version 1.0, Phase 1.0
Package: System Management
Details: Created on: 5/05/2003, Modified on: 13/05/2003, Author: Chuck Wilson