



MDG Technology For DoDAF-MODAF User Guide

Welcome to the MDG Technology For DoDAF-MODAF



© Copyright 2008 Sparx Systems Pty Ltd

MDG Technology For DoDAF-MODAF User Guide

Introduction

by Neil Capey

*MDG Technology For DoDAF-MODAF is a link between
Enterprise Architect and DoDAF-MODAF.*

MDG Technology For DoDAF-MODAF User Guide

© 2008 Sparx Systems Pty Ltd

All rights reserved. No parts of this work may be reproduced in any form or by any means - graphic, electronic, or mechanical, including photocopying, recording, taping, or information storage and retrieval systems - without the written permission of the publisher.

Products that are referred to in this document may be either trademarks and/or registered trademarks of the respective owners. The publisher and the author make no claim to these trademarks.

While every precaution has been taken in the preparation of this document, the publisher and the author assume no responsibility for errors or omissions, or for damages resulting from the use of information contained in this document or from the use of programs and source code that may accompany it. In no event shall the publisher and the author be liable for any loss of profit or any other commercial damage caused or alleged to have been caused directly or indirectly by this document.

Printed: May 2008

Publisher

Sparx Systems

Managing Editor

Geoffrey Sparks

Technical Editors

Neil Capey

Special thanks to:

All the people who have contributed suggestions, examples, bug reports and assistance in the development of MDG Technology for DODAF-MODAF. The task of developing and maintaining this tool has been greatly enhanced by their contribution.

Table of Contents

Foreword	1
Welcome	2
Copyright Notice	2
Software Product License Agreement	3
Acknowledgement of Trademarks	4
Support	4
System Requirements	4
Getting Started	6
Using DoDAF-MODAF	7
DoDAF-MODAF Technology Menu	7
Model Wizard	7
DoDAF-MODAF Diagram Types	8
DoDAF-MODAF Toolboxes	9
Quicklinks	10
Model Validation	11
Tasks Pane	12
Model Views	12
Index	14

Foreword

MDG Technology For DoDAF-MODAF brings
DoDAF-MODAF into Enterprise Architect
modeling.

1 Welcome



Welcome to the *MDG Technology for DoDAF-MODAF - Enterprise Architect MDG Add-In, Version 1.0*.

This Add-in provides UML profiles that extend the capability of Enterprise Architect to enable creation of DoDAF and MODAF architecture models.

DoDAF is the abbreviation of Department of Defense Architecture Framework (USA); MODAF is the abbreviation of Ministry of Defence Architecture Framework (UK). The UML profiles provide a standard approach for modeling systems and enterprise architectures in support of the DoDAF and MODAF. They improve interoperability of architecture data among architecture modeling tools, enhance reuse of architecture data, and improve communication among DoDAF and MODAF stakeholders.

This technology is based on work done in the development of the UML Profile for DoDAF-MODAF (UPDM). Full details of the UML profiles, including the latest specification, can be obtained from the Object Management Group (OMG) website: <http://syseng.omg.org/UPDM.htm>.

Getting Started

For instructions on how to begin using the MDG Technology for DoDAF-MODAF, see [Getting Started](#)^[6].

See Also

- [Copyright Notice](#)^[2]
- [Acknowledgement of Trademarks](#)^[4]
- [License Agreement](#)^[3]
- [Support](#)^[4]
- [System Requirements](#)^[4]

1.1 Copyright Notice

Copyright © 2008 Sparx Systems Pty. Ltd. All rights reserved.

The software contains proprietary information of Sparx Systems Pty Ltd. It is provided under a license agreement containing restrictions on use and disclosure and is also protected by copyright law. Reverse engineering of the software is prohibited. Please read the [license agreement](#)^[3] for full details.

Due to continued product development, this information may change without notice. The information and intellectual property contained herein is confidential between Sparx Systems and the client and remains the exclusive property of Sparx Systems. If you find any problems in the documentation, please report them to us in writing. Sparx Systems does not warrant that this document is error-free. No part of this publication may be reproduced, stored in a retrieval system, or transmitted in any form or by any means, electronic, mechanical, photocopying, recording or otherwise without the prior written permission of Sparx Systems. Licensed users are granted the right to print a single hardcopy of the user manual per licensed copy of the software, but may not sell, distribute or otherwise dispose of the hardcopy without written consent of Sparx Systems.

Sparx Systems Pty. Ltd.
7 Curtis St,
Creswick, Victoria 3363,
AUSTRALIA

Phone: +61 (3) 5345 1140
Fax: +61 (3) 5345 1104

Support Email: support@sparxsystems.com

Sales Email: sales@sparxsystems.com

Website: <http://www.sparxsystems.com>

1.2 Software Product License Agreement

MDG Technology for DoDAF-MODAF - Enterprise Architect MDG Add-In, Version 1.0.

Copyright (C) 2008 Sparx Systems Pty Ltd. All Rights Reserved

IMPORTANT-READ CAREFULLY: This End User Licence Agreement ("EULA") is a legal agreement between YOU as Licensee and SPARX for the SOFTWARE PRODUCT identified above. By installing, copying, or otherwise using the SOFTWARE PRODUCT, YOU agree to be bound by the terms of this EULA.

If YOU do not agree to the terms of this EULA, promptly delete the unused SOFTWARE PRODUCT.

The copyright in the SOFTWARE PRODUCT and its documentation is owned by Sparx Systems Pty Ltd, A.B.N 38 085 034 546. Subject to the terms of this EULA, YOU are granted a non-exclusive right for the duration of the EULA to use and modify the SOFTWARE PRODUCT. YOU do not acquire ownership of copyright or other intellectual property rights in any part of the SOFTWARE PRODUCT by virtue of this EULA.

Your use of this software indicates your acceptance of this EULA and warranty.

DEFINITIONS

In this End User Licence Agreement, unless the contrary intention appears:

- "EULA" means this End User Licence Agreement
- "SPARX" means Sparx Systems Pty Ltd A.C.N 085 034 546
- "Licensee" means YOU, or the organization (if any) on whose behalf YOU are taking the EULA.
- "SOFTWARE PRODUCT" or "SOFTWARE" means MDG Technology for DoDAF-MODAF, which includes computer software and associated media and printed materials, and may include online or electronic documentation.

GRANT OF LICENSE

In accordance with the terms of this EULA YOU are granted the following rights:

- a) To install and use ONE copy of the SOFTWARE PRODUCT or, in its place, any prior version for the same operating system, on a single computer. As the primary user of the computer on which the SOFTWARE PRODUCT is installed, YOU may make a second copy for your exclusive use on either a home or portable computer.
- b) To store or install a copy of the SOFTWARE PRODUCT on a storage device, such as a network server, used only to install or run the SOFTWARE PRODUCT over an internal network.
- c) To make copies of the SOFTWARE PRODUCT for backup, archival and instructional purposes.

EVALUATION LICENSE

The Trial Version of MDG Technology for DoDAF-MODAF is not free software. Subject to the terms of this agreement, YOU are hereby licensed to use this software for evaluation purposes without charge for a period of 30 days.

Upon expiration of the 30 days, the SOFTWARE PRODUCT must be removed from the computer. Unregistered use of MDG Technology for DoDAF-MODAF after the 30-day evaluation period is in violation of Australian, U.S. and international copyright laws.

SPARX may extend the evaluation period on request and at their discretion.

If YOU choose to use this software after the 30 day evaluation period a license must be purchased (as described at http://www.sparxsystems.com/ea_purchase.htm). Upon payment of the license fee, YOU will be sent details on where to download the registered edition of MDG Technology for DoDAF-MODAF and will be provided with a suitable software 'key' by email.

ADDITIONAL RIGHTS AND LIMITATIONS

YOU hereby undertake not to sell or sub-licence the SOFTWARE PRODUCT other than as expressly authorized by this EULA.

NO WARRANTY. The SOFTWARE PRODUCT is provided "AS IS", without warranty of any kind, and SPARX

expressly disclaims all warranties and/or conditions with respect to the SOFTWARE PRODUCT, either express, implied or statutory, including, but not limited to, the implied warranties and/or conditions of merchantability, of satisfactory quality, of fitness for a particular purpose, of accuracy, of quiet enjoyment, and of non-infringement of third party rights.

LIMITATION

Under no circumstances shall SPARX be liable for any incidental, special, indirect or consequential damages arising out of or relating to this license or YOUR use, reproduction, modification, distribution of the SOFTWARE PRODUCT, or any portion thereof, whether under a theory of contract, warranty, strict liability or otherwise, even if the copyright holder has been advised of the possibility of such damages and notwithstanding the failure of essential purpose of any remedy.

TRADEMARKS

All names of products and companies used in this EULA, the SOFTWARE PRODUCT, or the enclosed documentation may be trademarks of their corresponding owners. Their use in this EULA is intended to be in compliance with the respective guidelines and licenses.

Windows, Windows NT®, Windows ME, Windows XP, Windows Vista, Windows 2000 and Windows 2003 are trademarks of Microsoft®.

GOVERNING LAW

This agreement shall be construed in accordance with the laws of the Commonwealth of AUSTRALIA.

1.3 Acknowledgement of Trademarks

Trademarks of Microsoft

- Microsoft®
- Windows®

Trademarks of the OMG

- OMG™
- Object Management Group™
- UML™
- Unified Modeling Language™

1.4 Support

Technical support for MDG Technology for DoDAF-MODAF is available to registered users of Enterprise Architect. Responses to support queries are sent by email. Sparx Systems endeavors to provide a rapid response to all product-related questions or concerns.

Registered users can lodge a support request, by visiting:
http://www.sparxsystems.com/registered/reg_support.html.

Trial users can contact Sparx Systems with questions regarding their evaluation at:
support@sparxsystems.com.

An online user forum is also available for your questions and perusal, at
<http://www.sparxsystems.com/cgi-bin/yabb/YaBB.cgi>.

1.5 System Requirements

MDG Technology for DoDAF-MODAF runs under the following environments:

Operating Systems

- Windows XP Professional

- Windows XP Home
- Windows XP Media Edition
- Windows XP Tablet Edition
- Windows NT® (SP5 or later)
- Windows ME
- Windows 2000 Professional (SP3 or later)
- Windows Vista (32 bit)

Enterprise Architect Versions

- Enterprise Architect Professional Version 7.1.827 (or later)
- Enterprise Architect Corporate Version 7.1.827 (or later)

Notes:

- While the MDG Technology for DoDAF-MODAF isn't specifically blocked from executing with the Enterprise Architect Desktop Edition, be aware that the Desktop Edition cannot make use of some of the capabilities of the product; e.g. Model Validation.
- There is a known limitation with the OpenEdge repository that prevents the loading of data fields greater than 30,000 bytes in size. This means that the MDG Technology for DoDAF-MODAF, which is larger than 30,000 bytes, cannot be loaded into a model that is stored in an OpenEdge repository. OpenEdge users are asked to use .EAP files for their DoDAF-MODAF modeling.

2 Getting Started

When you install the MDG Technology for DoDAF-MODAF, it should be fully enabled and ready to use.

Notes:

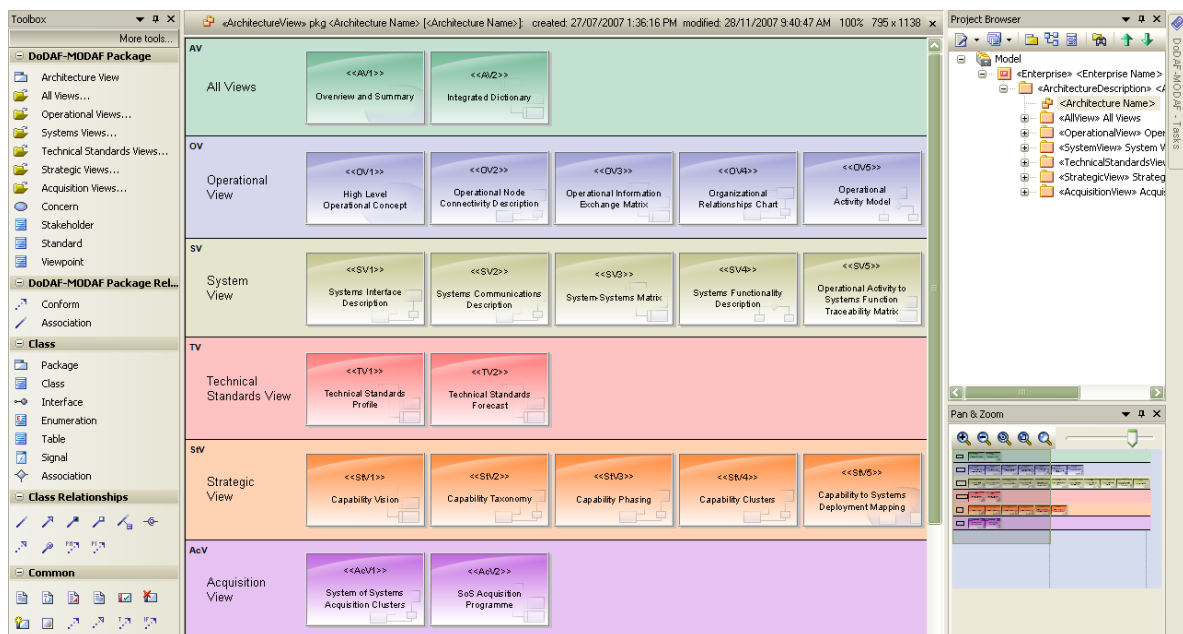
If you are reinstalling over a previous installation, the MDG Technology might not be enabled when you start Enterprise Architect. In this case:

- Select the **Add-Ins | Manage Add-Ins** menu option and, on the **Manage Add-Ins** dialog, select the **Load on Startup** checkbox against DoDAF-MODAF. Click on the **OK** button and restart Enterprise Architect.
- and / or
- Select the **Settings | MDG Technologies** menu option and, on the **MDG Technologies** dialog, select the **Enabled** checkbox against DoDAF-MODAF. Click on the **OK** button and restart Enterprise Architect.

Access the MDG Technology For DoDAF-MODAF

1. Create a new Enterprise Architect project file (or open an existing file).
2. From the **Main** menu select the **Add-Ins | DoDAF-MODAF Technology | Insert New DoDAF-MODAF Framework** menu option.

The **Project Browser** displays a template Enterprise Architecture framework, with the *Architecture View* diagram in the workspace area. Edit the Enterprise and Architecture names to reflect the model you are creating.



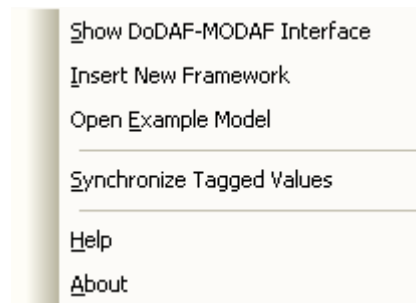
3 Using DoDAF-MODAF

This document describes:

- [DoDAF-MODAF Technology Menu](#) ^[7 ↗]
- [Model Wizard](#) ^[7 ↗]
- [DoDAF-MODAF Diagram Types](#) ^[8 ↗]
- [DoDAF-MODAF Toolboxes](#) ^[9 ↗]
- [Quicklinks](#) ^[10 ↗]
- [Model Validation](#) ^[11 ↗]
- [Tasks Pane](#) ^[12 ↗]
- [Model Views](#) ^[12 ↗]

3.1 DoDAF-MODAF Technology Menu

You can perform certain tasks on your DoDAF-MODAF model using the **DoDAF-MODAF Technology** menu, which you display by selecting the **Add-Ins | DoDAF-MODAF Framework** menu option in Enterprise Architect.

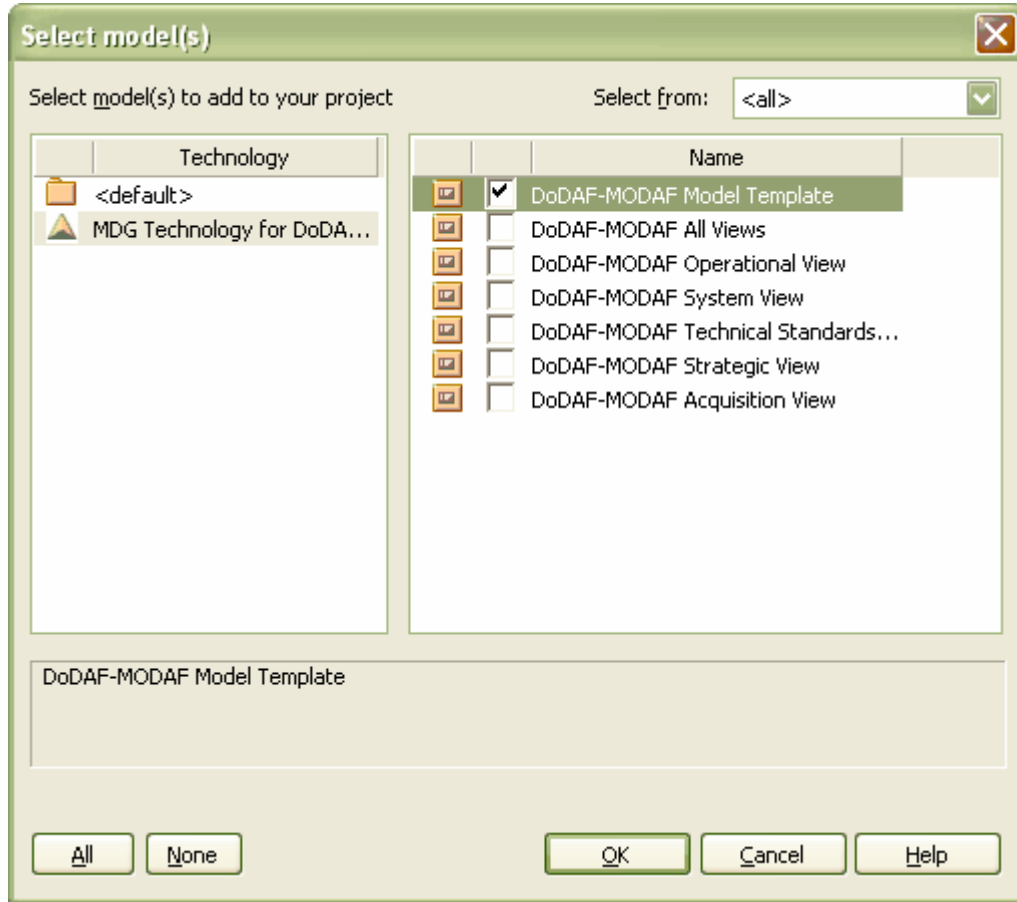


Commands

- **Show DoDAF-MODAF Interface:** Locates and opens the interface (front page) diagram in the current model, if one exists.
- **Insert New Framework:** Creates a new DoDAF-MODAF framework in the current model.
- **Open Example Model:** Opens the DoDAF example model.
- **Synchronize Tagged Values:** Adds missing Tagged Values to all elements in the model that require them. You should execute this command if a DoDAF-MODAF stereotype is added to an existing UML element.
- **Help:** Opens this help file.
- **About:** Shows the version of the MDG Technology for DoDAF-MODAF that you are using.

3.2 Model Wizard

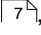
To use the Model Wizard to load a DoDAF-MODAF template, right-click on a Package in the Enterprise Architect **Project Browser** and select the **Add | Add Model Using Wizard** context menu option. The **Select Models** dialog displays.

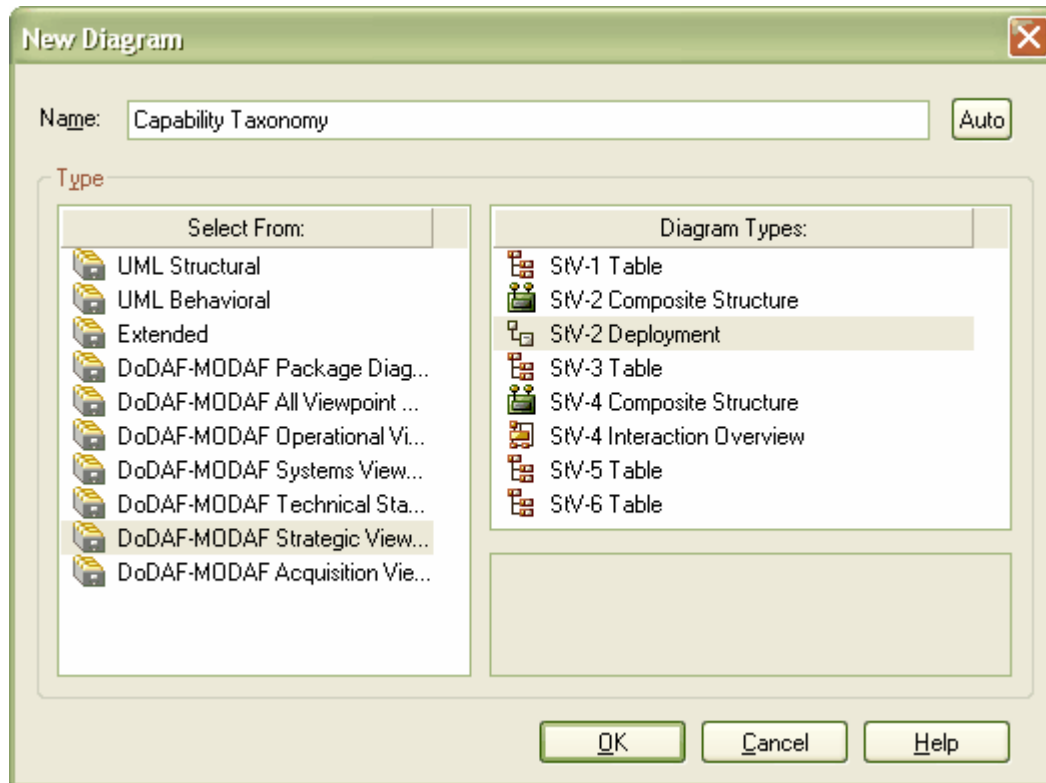


The first item in the above list loads the template for a whole project. The rest load a single view each.

3.3 DoDAF-MODAF Diagram Types

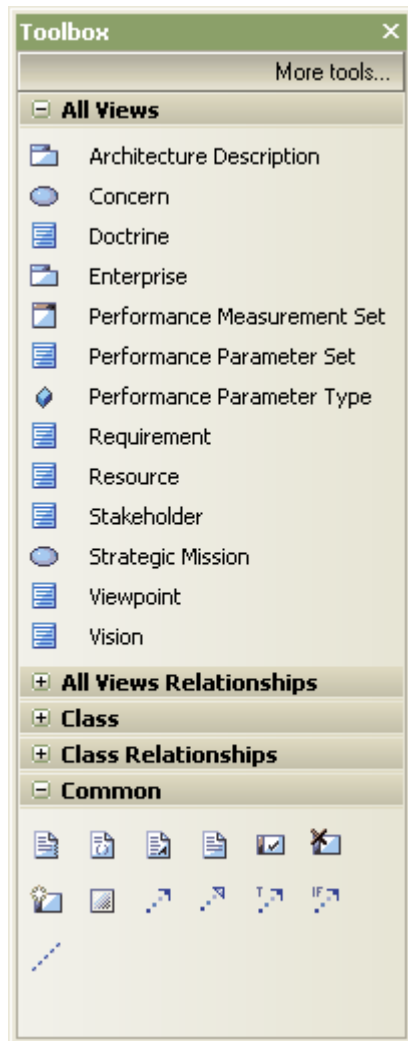
The MDG Technology for DoDAF-MODAF introduces a number of custom diagram types into Enterprise Architect. These are, for the most part, extended UML diagrams. On opening a DoDAF-MODAF diagram, Enterprise Architect automatically opens not only the appropriate DoDAF-MODAF toolboxes for the DoDAF-MODAF view, but also the appropriate UML toolboxes for the diagram type.

You can use the DoDAF-MODAF diagrams that are created by the [Model Wizard](#) , or create a new DoDAF-MODAF diagram.



3.4 DoDAF-MODAF Toolboxes

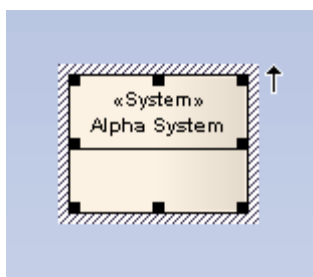
When you open a diagram, Enterprise Architect opens the **Toolbox** pages that are most useful for that particular diagram type. For a DoDAF-MODAF diagram, Enterprise Architect opens the **Toolbox** pages that contain elements and relationships appropriate to the particular view that the diagram is part of, as well the pages for the diagram type. For example, if you open an *AV-1 Class* diagram, Enterprise Architect opens the **All Views Elements** and **All Views Relationships** pages, and the UML **Class Elements** and **Class Relationships** pages. In addition, the **Common** elements and relationships page is always available, regardless of which diagram is open.



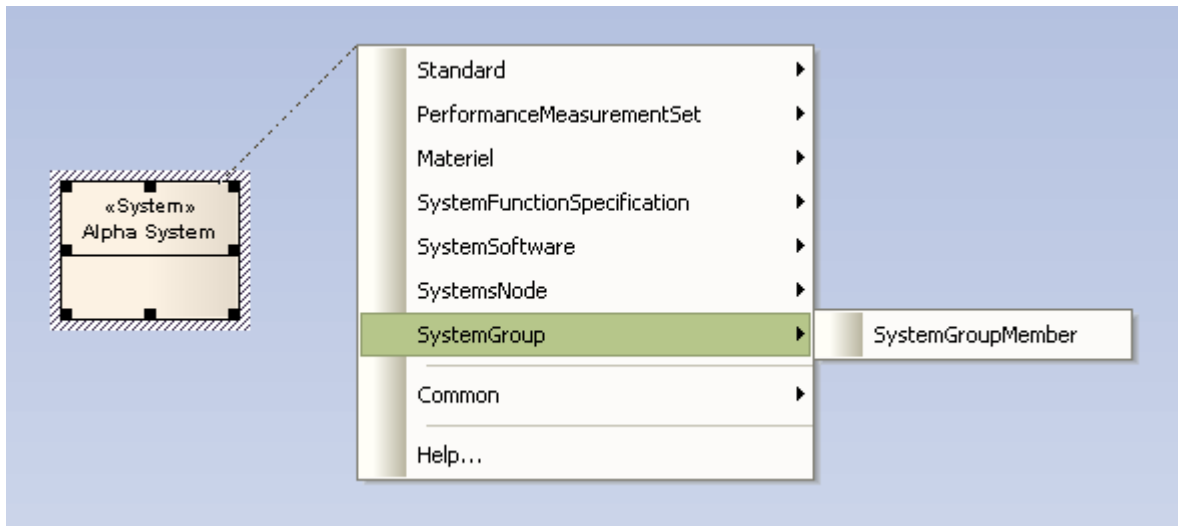
3.5 Quicklinks

The MDG Technology for DoDAF-MODAF makes use of Enterprise Architect's *Quicklink* feature to make it quicker and easier to create correct and self-consistent DoDAF-MODAF models.

To see an element's Quicklink pointer, select the element. In the following diagram, the Quicklink pointer is the upwards-pointing arrow off the top-right corner of the element.



Drag the Quicklink pointer away from the element and release it over empty diagram space; the Quicklink context menu displays. This context menu shows all the DoDAF-MODAF elements that would commonly be attached to the element, as in the following diagram.



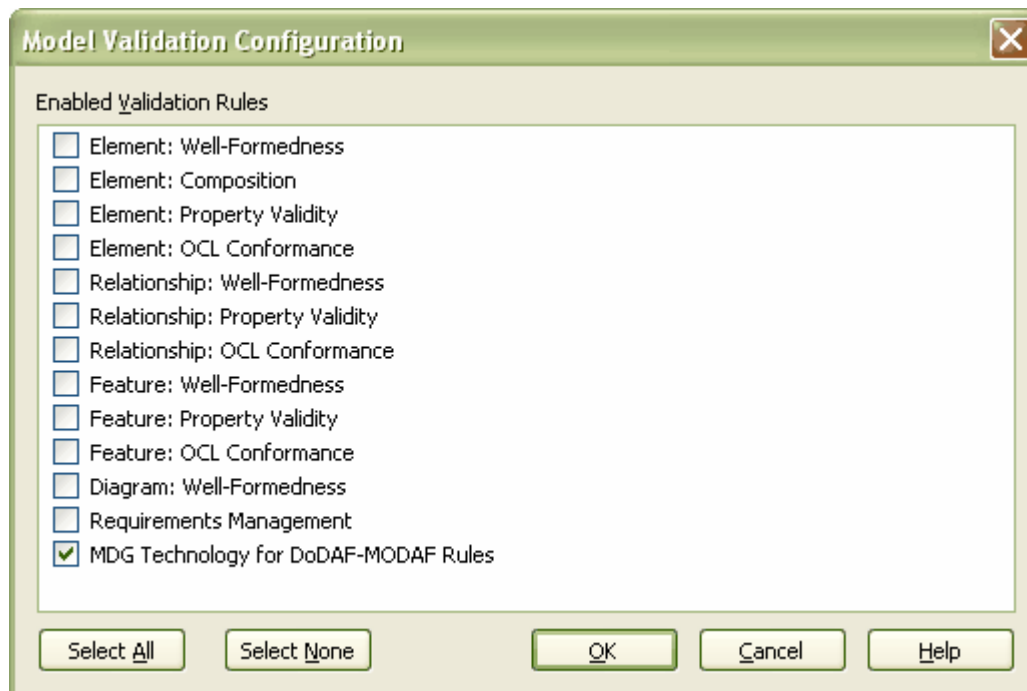
Selecting the **SystemGroup | SystemGroupMember** option in the above context menu creates a new *SystemGroup* element connected to the *System* element by a *SystemGroupMember* association.

3.6 Model Validation

The MDG Technology for DoDAF-MODAF provides model validation of DoDAF-MODAF models, validating and reporting errors against more than 160 different rules.

Configure Model Validation

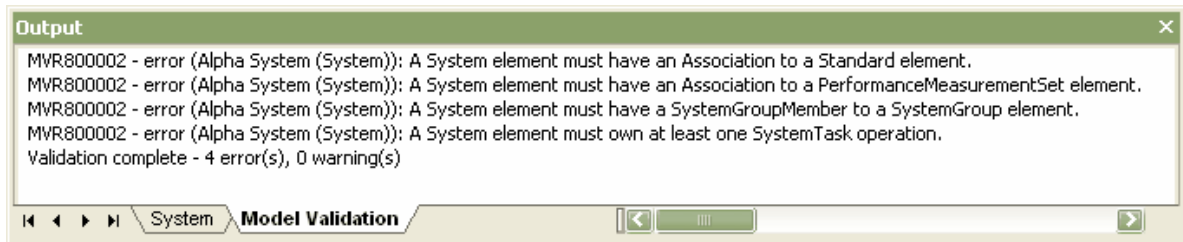
Before validating a model, you should first indicate which rules to validate against. Select the **Project | Model Validation | Configure** option from Enterprise Architect's main menu and switch off all of the rules except for the DoDAF-MODAF ones, as below:



Perform Model Validation

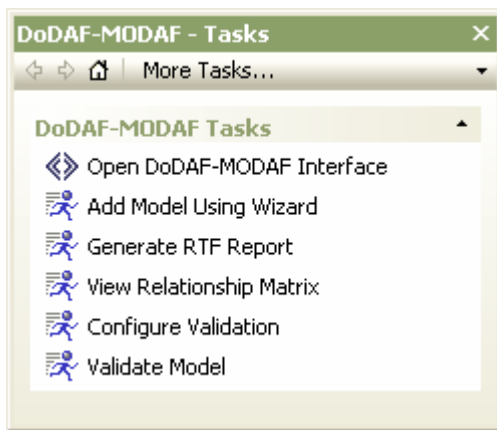
To perform model validation, simply open a diagram or select a package or select a number of elements and

either select the **Project | Model Validation | Validate Selected** menu option or press **[Ctrl]+[Alt]+[V]**. Validation results are displayed in the **Output** window, which is opened if it isn't already displayed.



3.7 Tasks Pane

The **Tasks Pane** is a docked window in Enterprise Architect that can show context-sensitive commands. The MDG Technology for DoDAF-MODAF populates this window with its own set of Enterprise Architect commands. To display the **Tasks Pane**, select the **View | Tasks Pane** menu option, or press **[Ctrl]+[Shift]+[9]**.

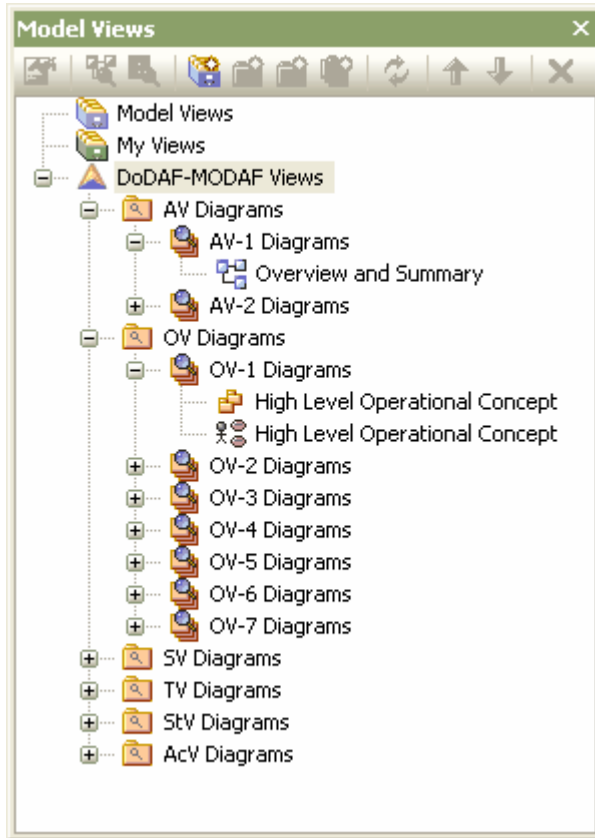


The available commands are:

- **Open DoDAF-MODAF Interface** - Locates and opens the interface (front page) diagram in the current model, if one exists.
- **Add Model Using Wizard** - Opens the [Model Wizard](#) ^[7].
- **Generate RTF Report** - Launches the Enterprise Architect **RTF Report Generator**.
- **View Relationship Matrix** - Opens the Enterprise Architect **Relationship Matrix**.
- **Configure Validation** - Opens the [Model Validation](#) ^[11] **Configuration** dialog.
- **Validate Model** - Performs [Model Validation](#) ^[11] using the current configuration details.

3.8 Model Views

The **Model Views** window displays a variety of different views on the model data, providing an alternative to the **Project Browser**. The MDG Technology for DoDAF-MODAF uses this window as a quick and easy method of locating all of your diagrams in the current model.



To open the **Model Views** window, select the **View | Model Views** menu option. Once you locate the required diagram, double-click on it to open it.

Index

- C -

Compiled 28 April 2008 2

- D -

Diagrams

MDG Technology For DoDAF-MODAF 8

- M -

MDG Technology For DoDAF-MODAF

Acknowledgement Of Trademarks 4

Add-In Menu 7

Copyright Notice 2

Diagram Types 8

Getting Started 6

license Agreement 3

Model Validation 11

Model Views 12

Model Wizard 7

Support 4

System Requirements 4

Tasks Pane 12

Toolbox Pages 9

Using DoDAF-MODAF 7

Welcome 2

Menu

MDG Technology For DoDAF-MODAF 7

Model Validation

MDG Technology For DoDAF-MODAF 11

Model Views

MDG Technology For DoDAF-MODAF 12

Model Wizard

MDG Technology For DoDAF-MODAF 7

- Q -

Quicklinks

And MDG Technology For DoDAF-MODAF 10

Create DoDAF-MODAF Connectors 10

Create DoDAF-MODAF Elements 10

- S -

Support

For MDG Technology For DoDAF-MODAF 4

System Requirements

For MDG Technology For DoDAF-MODAF 4

- T -

Tasks Pane

MDG Technology For DoDAF-MODAF 12

Toolbox Pages

And MDG Technology For DoDAF-MODAF 9

MDG Technology For DoDAF-MODAF User Guide

www.sparxsystems.com