

Using the ICONIX Process Roadmap

Doug Rosenberg, ICONIX

www.iconixsw.com

www.iconixprocess.com

Beginning with Version 6.5, Build 801, Enterprise Architect includes a startup option (Figure 1) to install an **ICONIX Process Roadmap** and an **ICONIX Skeleton Project** upon creating a new project. This white paper explains how to use these capabilities, which facilitate the use of a **lightweight, agile, use case driven UML development process**.

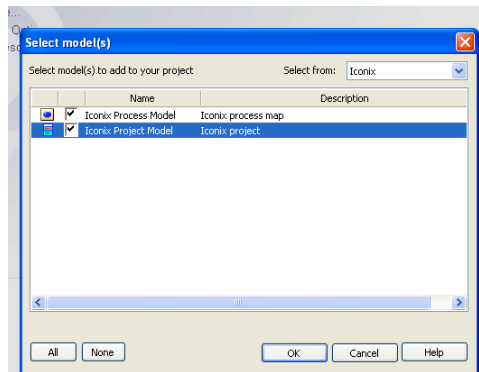


Figure 1 – Install the ICONIX Process Model and Skeleton Project when creating a new EA project.

ICONIX Process is defined in several books, most recently [Use Case Driven Object Modeling with UML – Theory and Practice](#) (Apress 2007), which I co-authored with Matt Stephens. In the Theory/Practice book, we define the process in a set of activity diagrams, and provide additional guidance on topics such as use case modeling, domain modeling, and sequence diagramming in the form of Top-10 “to-do” lists.

When you install the ICONIX Process Roadmap as you start a new EA model, these activity diagrams and Top-10 lists are automatically loaded into your project.

Opening the top level activity diagram (Figure 2), gives you the option to “drill-down” by lifecycle phase, or to view the Top 10 lists.

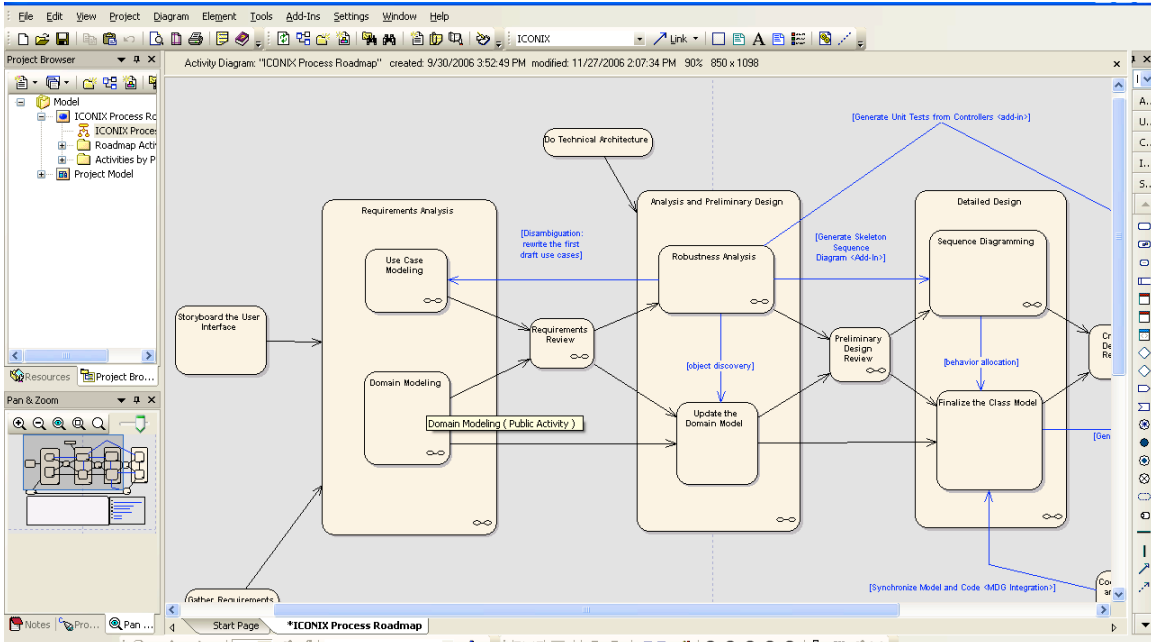


Figure 2 – The Top Level ICONIX Process Activity Diagram lets you drill deeper into the process

For example, double-clicking on the “Requirements Analysis” lifecycle phase opens this detailed activity diagram (Figure 3), which details an easy-to-follow sequence of steps for defining a domain model, a use case model, and for allocating functional requirements to your use cases.

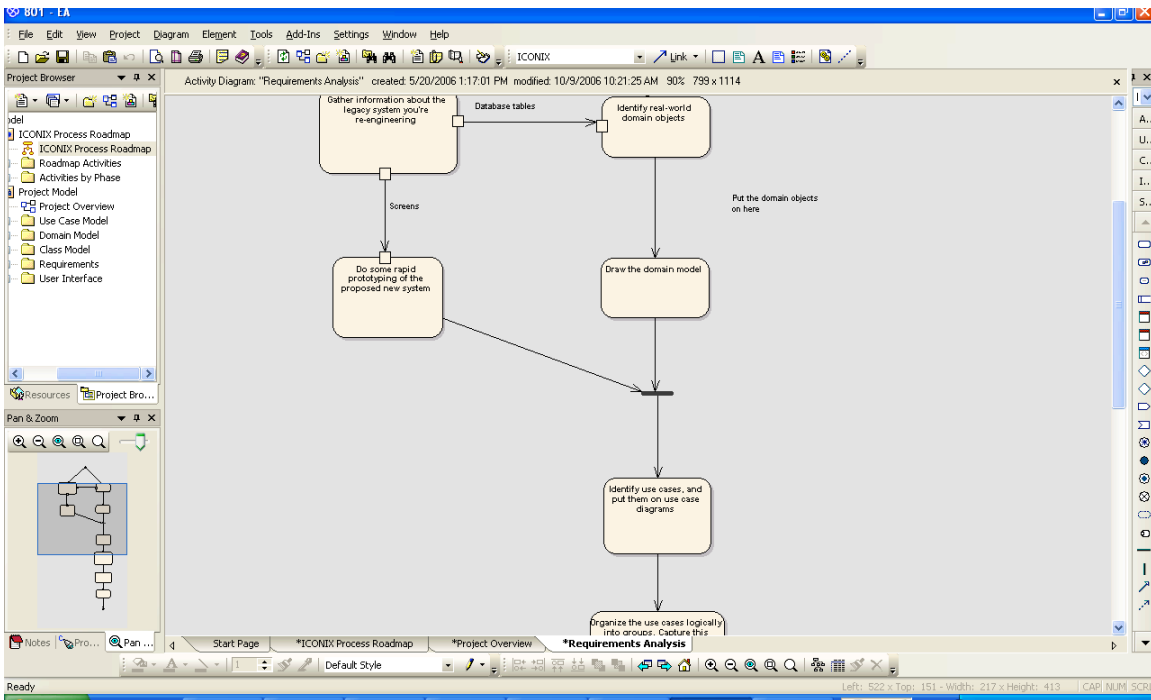


Figure 3 – Follow these steps for a comprehensive Requirements Analysis

Similarly, clicking on “Detailed Design” results in a detailed activity diagram (Figure 4) for driving an object-oriented design from your use cases using sequence diagrams. This includes automatic generation of skeleton sequence diagrams (and test cases) using the “Agile/ICONIX Add-In” which can be found on the [“Enterprise Architect for Power Users”](#) multimedia tutorial.

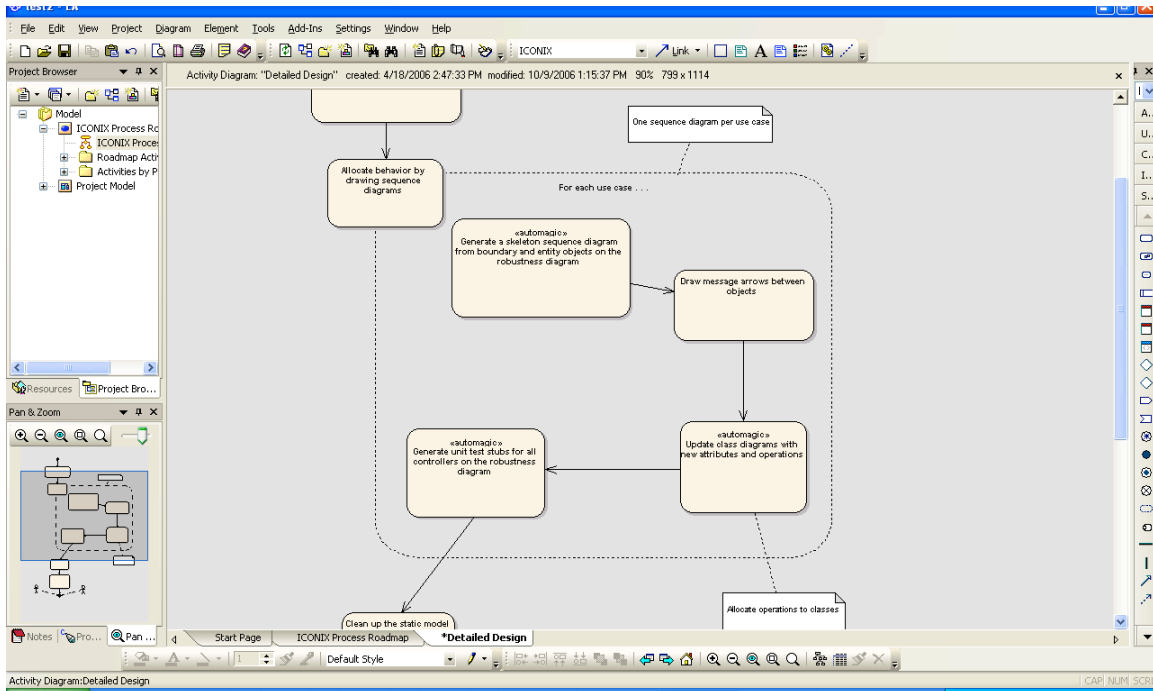


Figure 4 – Automatic generation of sequence diagrams supports a use case driven approach

The activity diagram for “Implementation” (Figure 5) fully leverages the Sparx [MDG Integration](#) capability to keep models and code in-synch over the lifetime of the project. This state-of-the-art capability is critically important in helping an organization to successfully adopt modeling over a project’s full lifespan, in a truly Agile fashion.

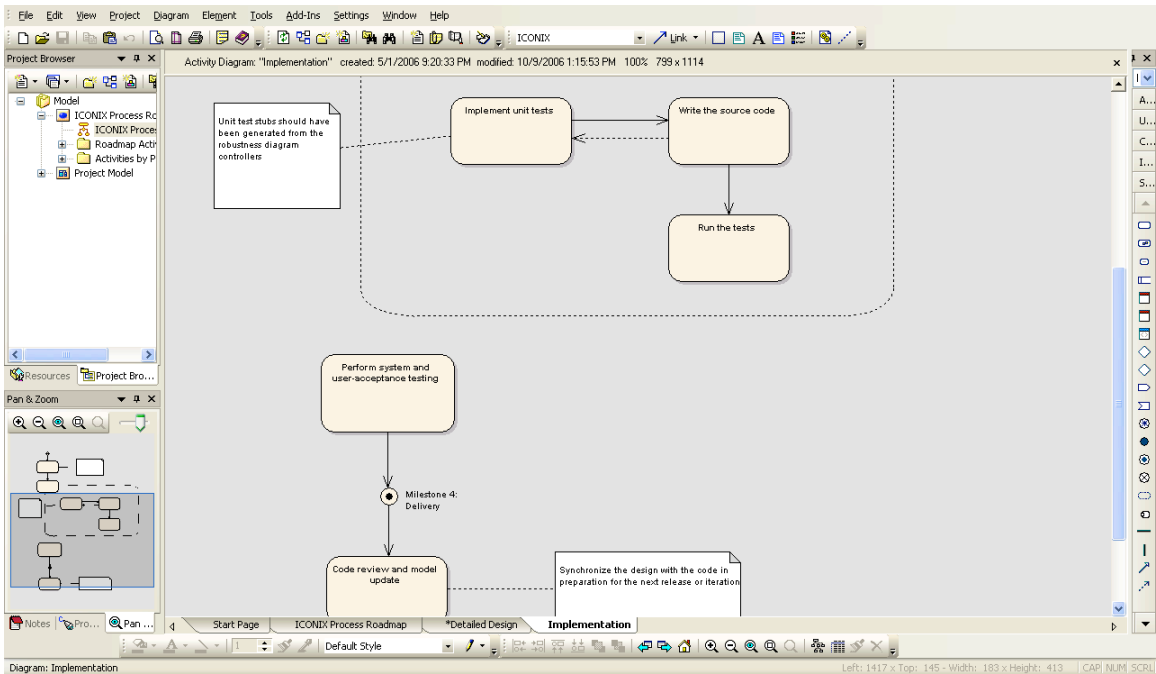


Figure 5 – ICONIX Process provides guidance on implementation, testing, and on keeping models and code synchronized over time

In addition to the detailed activity diagrams, you can also drill-down to view Top-10 guidance on any modeling activity. For example, Figure 6 shows the Top 10 Domain Modeling guidelines.

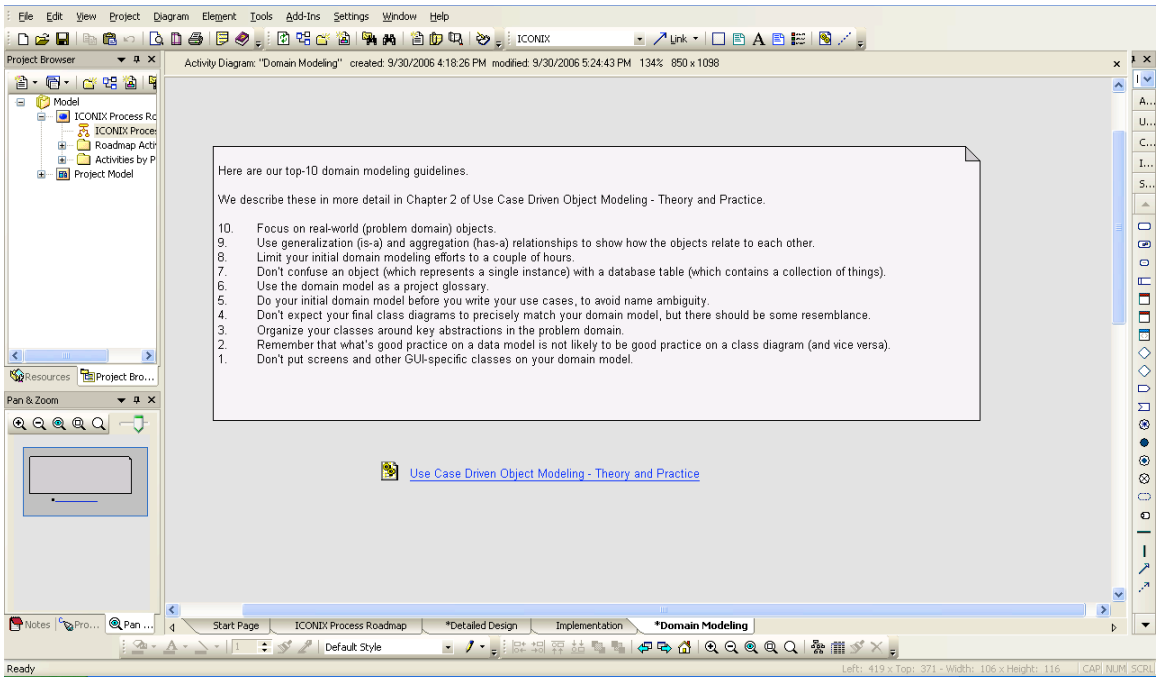


Figure 6 – Top 10 Guidelines are amplified in the Theory/Practice book

In addition to the Roadmap, you have the option to create a skeleton “ICONIX-style-project” (Figure 7) when creating a new EA model.

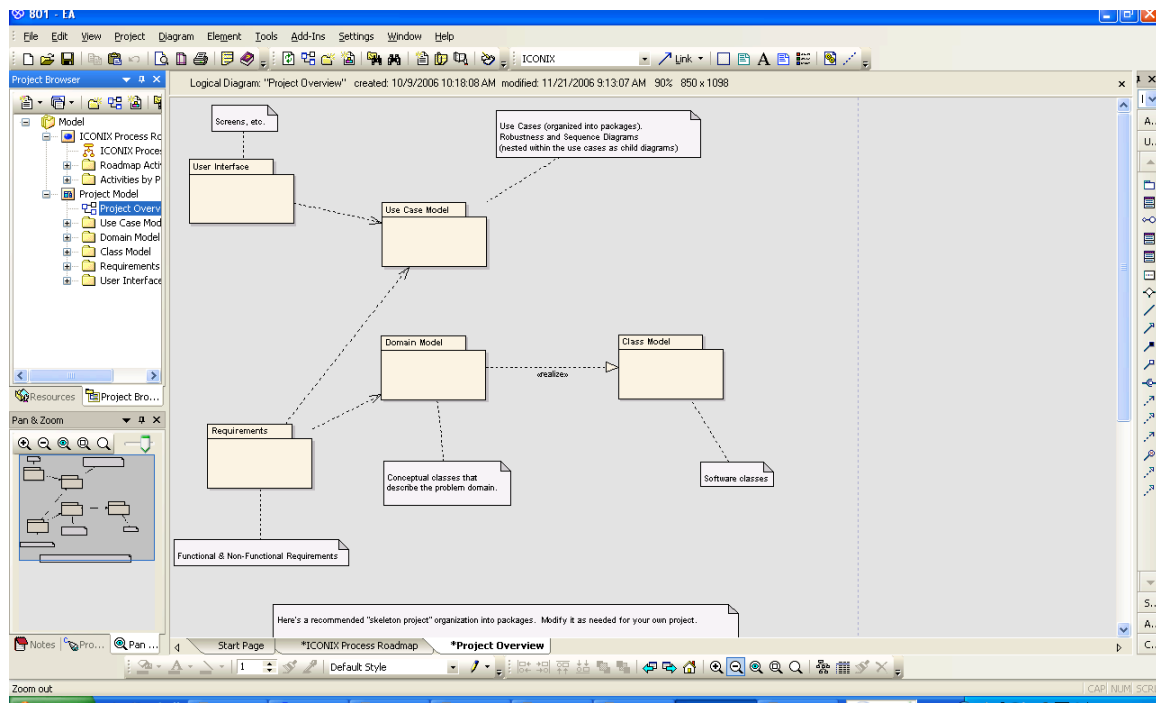


Figure 7 – Our “pre-fabricated” skeleton project will help keep your modeling work organized

The default **ICONIX skeleton project** contains predefined packages for the core UML diagrams that you’ll create while following our step-by-step roadmap. We’ve arrived at this skeleton project structure while helping hundreds of companies get their projects started in [ICONIX JumpStart Training](#) workshops. We’ve also defined packages to contain “extended” modeling elements that aren’t formally a part of the UML such as requirements and user interface mockups.

If you’re looking for a **minimalist, lightweight, agile UML process**, we hope you’ll find that the availability of the ICONIX Process Roadmap will help everyone on your team to stay on the same page with your development effort.

For more info, email us at umltraining@iconixsw.com.