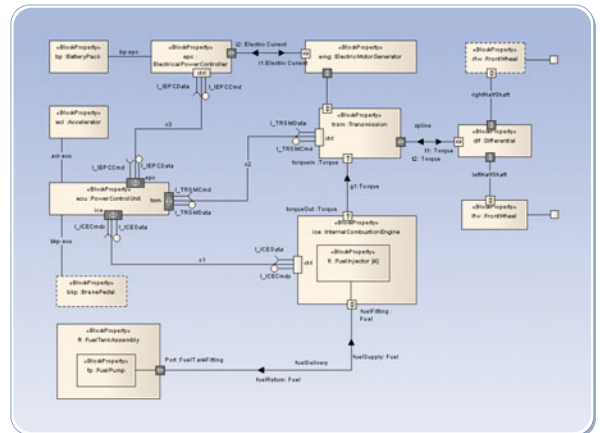


# SysML™

Empower your  
Engineers

Specify, analyze and design  
large-scale systems using  
SysML with Enterprise Architect

MDG Technology for SysML provides a rich, team-based modeling environment for systems engineering. Tightly integrated with Sparx Systems' award-winning Enterprise Architect, MDG Technology for SysML helps engineers to specify requirements, design robust systems and model with all 9 SysML diagrams.



### Enterprise Architect, together with MDG Technology for SysML, delivers the ultimate modeling solution for Systems Engineering!

Specify system behavior with SysML Requirements. Design nested systems and subsystems with SysML Blocks and Parts. Analyze system-to-system behavior using Interaction Diagrams, Activities and State Machines. Define system dynamics and enforce correctness with Parametric and Constraint blocks.

Model with all 9 SysML Diagrams

Increase productivity with **MDA** (Model Driven Architecture) transformations

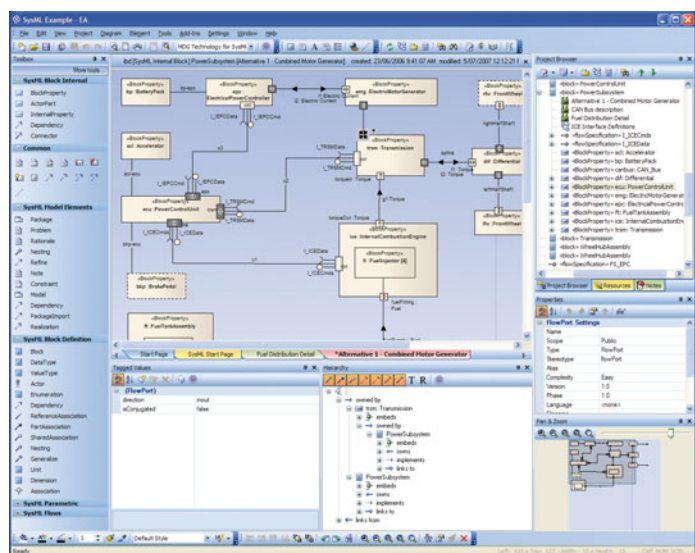
Visualize and trace formal **requirements** to analysis and design elements

Collaborate and communicate with peers using the **built-in Discussion Forum**

Access critical meta-data quickly, using the **custom Search Facility**

**Generate** reports and view SysML Allocations

**Leverage** the latest XMI 2.1 and UML 2.1 specifications



Empower your engineers  
with SysML today!

Download your FREE trial at:  
[www.sparxsystems.com/sysml](http://www.sparxsystems.com/sysml)