

# A Complete Platform

## Improve Enterprise Analysis & Optimization

Sparx Systems Enterprise Architect is a comprehensive, team based modeling environment with benefits across the enterprise including business strategies, organizational structures, business processes, tasks and activities, information flows, deployment and systems integration.

### Analysis & Design

#### Frameworks

Bridge the gap between business and IT with TOGAF, ArchiMate, FEAF, SOMF, UPDM, DoDAF, MODAF and Zachman Frameworks.

#### Open Standards

Extend your visualization with specific industry profiles including BPMN, BPSim, SysML, DDS™, CORBA®, Testing, EJB, SoaML, Python® and more!

#### Understand the Challenge!

Implement strategic modeling into your business and operations with mind mapping, organizational charts, flowcharts, value chain, balanced scorecard and strategy maps.

Drive rapid downstream development with automatic test generation and Structured Scenarios with automatic activity diagram creation.

#### UML® Modeling

All 13 UML 2.5 diagrams supported!

From requirements to analysis, through design and build - and on into deployment and maintenance; Enterprise Architect leverages the full capability of UML to provide powerful model driven development.

### Enterprise Tools

#### Database Modeling

Forward and reverse engineer databases in SQL Server, Oracle, MySQL®, DB2, Sybase®, PostgreSQL, more!

#### Navigate, Search & Trace

Utilize model views, model search, element traceability and the relationship matrix for project change management.

#### Visualize, Validate, Debug & Profile

Better understand the workings of your software and legacy systems with the Visual Execution Analyzer. Generate, build, debug and visualize your business and software systems.

#### Scripting & Automation

Take control with Enterprise Architect scripts in JavaScript, JScript and VBScript to handle time consuming and repetitive GUI tasks. Extend the core toolset and take advantage of Enterprise Architect's repository with its powerful Automation Interface.

#### Integration & Connectivity

Integrate with your favorite IDE keeping your project and your code on the same page. Integrations available for Visual Studio®, Eclipse™.

### Take Control

#### Manage

Manage your teams, workload, projects and requirements from the one platform.

Streamline your projects with version control and model security.

#### Reporting

Deliver a consistent message with built in Rich-Text format and HTML documentation.

Use model documents, custom reporting and report templates for consistent, up to the second project reporting. Never be in the dark again.

#### Testing & Quality Control

Employ auditing, baseline, issue, bug and change tracking to help you meet demanding project requirements and quality levels. Produce better products to obtain the winning edge.

#### Glossary

Imagine your whole team - from managers to developers - speaking the same language. Keep everyone on the same page with the powerful integrated project glossary!

#### BPSim

Test ideas, identify optional staffing ratios and eliminate bottleneck by running BPSim simulations against BPMN diagrams.

## Industry Standards & Frameworks



TOGAF™



UPDM



SoaML™



SOMF™



Business Rules Modeling



Strategic Modeling



BPMN™



DFD



Zachman Framework



GoF



ArchiMate®



Mind Mapping



# TOOLS TO TAKE CONTROL

Take charge of Development, Analysis, Business, Systems,  
Data, Planning, Processes, Deployment, Technology and Strategies.

## Describe

### Describe your Information Architecture

Gain a greater appreciation of the structure of information within an enterprise.

- Provide an enterprise view of information flow and structure.
- Define your information system as a series of building blocks using TOGAF.
- Facilitate navigation through vast quantities of information.
- Provide a common vocabulary.
- Group information in an intuitive, logical and hierarchical manner.
- Represent information using UML diagrams to improve understanding.
- Use powerful visualizations to interpret information.
- Locate vital project information quickly.
- Establish relationships between critical model artifacts.

### Describe your Data

Describe your enterprise data more effectively to derive greater productivity.

- Organize and label information more effectively using tagged values.
- Measure the value, risk and cost of artifacts.
- Customize and extend metadata.
- Clearly identify and describe packages.
- Record the status, difficulty, version and priority for every model artifact.
- Track who created each artifact for better accountability and security.
- Ensure the timeliness of enterprise information with date stamps.
- Describe each model artifact to facilitate collaboration
- Improve data search performance.

### Depict Conceptual Enterprise Models

Create data models to develop a greater conceptual understanding of your enterprise.

- Visualize data models and highlight data dependencies.
- Build database diagrams using the built-in UML Data Modeling Profile.
- Reduce data redundancy via visualization and robust data modeling.
- Visualize data processing via Data Flow Diagrams (DFD).
- Generate Class Diagrams from legacy code.
- Ensure data quality through validation and a comprehensive testing environment.
- Use models to determine completeness, accuracy and timeliness of information.
- Provide a greater shared understanding of data models by using a central repository.
- Manage information throughout the lifecycle.
- Encapsulate relevant data via model views and diagram filters.

### Key Advantages of Sparx Systems Enterprise Architect

- ✓ Complete traceability from concept to deployment.
- ✓ Decompose complex problems into constituent parts.
- ✓ Visualize the deployment of hardware and software.
- ✓ Identify areas of operational inefficiency.
- ✓ Record and manage maintenance issues.
- ✓ Provide an enterprise view of information structure.
- ✓ Develop TOGAF, DoDAF, MODAF, UPDM and Zachman Frameworks.
- ✓ Measure risk, priority and cost using tagged values.
- ✓ Visualize program execution.
- ✓ Create baselines to monitor change.

## Design

### Model Business Rules & Processes

Better understand the rules and processes that help drive success within your enterprise.

- Track critical processes, activities and people.
- Optimize business processes using flowcharts.
- Reduce duplication and streamline existing processes.
- Develop policies, procedures and constraints as business rules.
- Help to identify areas of operational inefficiency.
- Implement policy via workflow scripts.

### Simplify Design

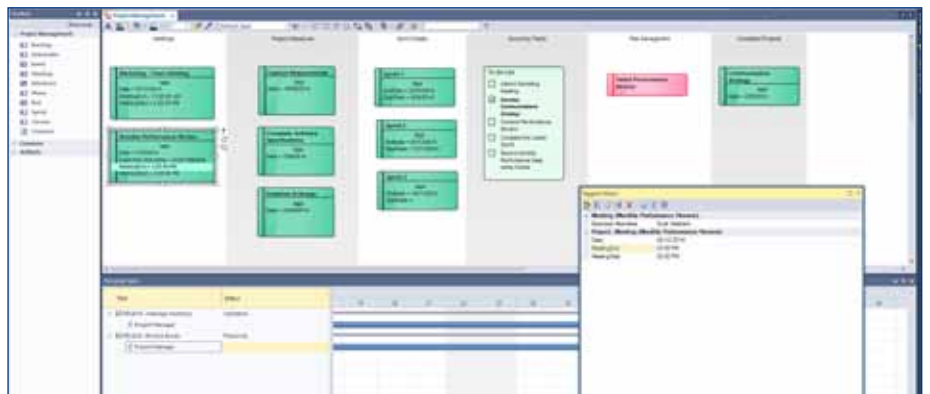
Simplify large complex systems into smaller parts that are easier to manage, understand, refine and optimize.

- Decompose complex problems into their constituent parts.
- Understand, refine and optimize each part.
- Focus your development effort on the areas that count.
- Optimize time management and organizational cycles.
- Develop robust systems with reduced maintenance costs.
- Support the software development lifecycle.
- Improve event timing and organizational cycles.
- Record and manage maintenance issues as they arise.
- Track and assign maintenance items via the Maintenance Workspace.
- Sequence key events using Activity Diagrams.
- Explore object behavior throughout a given period of time.

### Implement Corporate Policy

Address strategic goals and document compliance with vital legislation and industry guidelines.

- Produce strategic models that identify goals.
- Trace corporate strategies to deliverable outcomes.
- Document compliance using flowcharts and business rules.
- Discuss guidelines using the Team Review Window.
- Implement change management and security policies.



Enterprise Architect Speed, Stability and Performance

# TOOLS TO TAKE CONTROL

Ultimate Modeling Environment

## Manage

### Manage Interoperability & Cooperation

Enable applications to exchange data and work cooperatively.

- Illustrate the sequence of messages between applications using Communication Diagrams.
- Import and export data to avoid vendor lock-in.
- Import legacy code to re-use software libraries and better integrate software.
- Access model information from within your favorite IDE.
- Import models seamlessly to bridge the gap between different application environments.
- Facilitate collaboration and exchange between applications using SoaML.
- Offer applications as web services to share business functions across the enterprise and maximize reuse.
- Describe the services and fault handling visible to external components.

### Visualize Deployed Software

Better understand the applications that support and manage your business data.

- Visualize software components within an enterprise using Deployment Diagrams.
- Understand the sequence and relationships between various functions.
- Visualize program execution and see how messages are passed between applications.
- Illustrate interactions, data structures and important relationships between applications.
- Understand the functions and events that trigger state change.
- Map business functions to deployed software.

*Generate easily understood reports in RTF and HTML formats.*

- ✓ Create mind maps to store and exchange information.
- ✓ Distribute read-only models to key stakeholders.
- ✓ Share the one repository and common language.
- ✓ Facilitate better alignment between Business and IT.

*Included MDG Technologies*

- ✓ ArcGIS
- ✓ GML
- ✓ Office Integration
- ✓ BPSim Execution Engine
- ✓ DOORS
- ✓ TOGAF
- ✓ UPDM
- ✓ Zachman Framework.

## Integrate

### Deploy & Integrate Hardware

Better understand the deployment of hardware to optimize the use of resources within your enterprise.

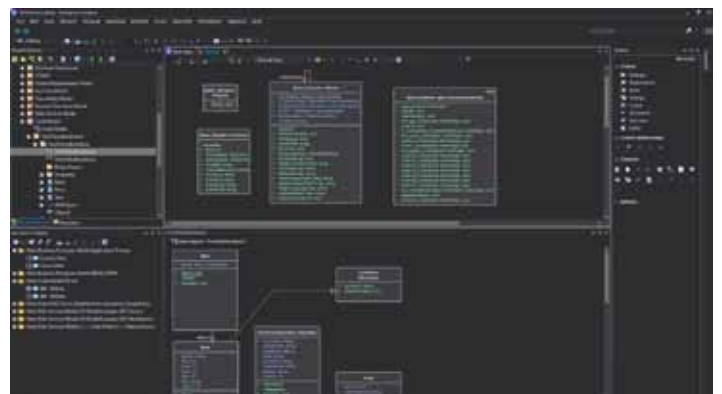
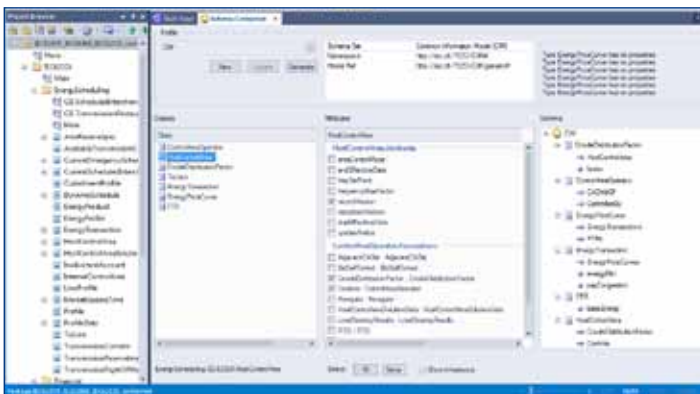
- Visualize the deployment of hardware infrastructure.
- Understand information flow between routers, firewalls and web servers.
- View the run-time configuration of network nodes.
- Document and plan server deployment.
- Provide traceability between staff, workstations and software artifacts.

### Integrate Technology

Understand the risk and value of technology assets that manage enterprise data.

- Leverage leading frameworks including TOGAF, DoDAF, MODAF, UPDM and Zachman Framework.
- Access leading integrated development environments from within Enterprise Architect.
- Connect databases, applications and services.
- Develop web services and SOA to better integrate isolated systems, across business units.
- Better understand the evolution of technology deployment using Model Baseline comparisons.
- Model hardware, software and network infrastructure deployment.
- Expose business processes as reusable services on a common software platform.
- Generate and reverse engineer code in over 10 leading programming languages.

## Create a shared vision using a team based modeling tool



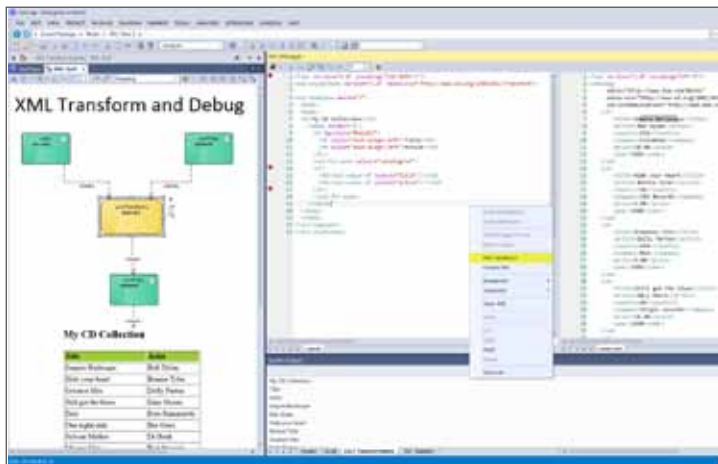
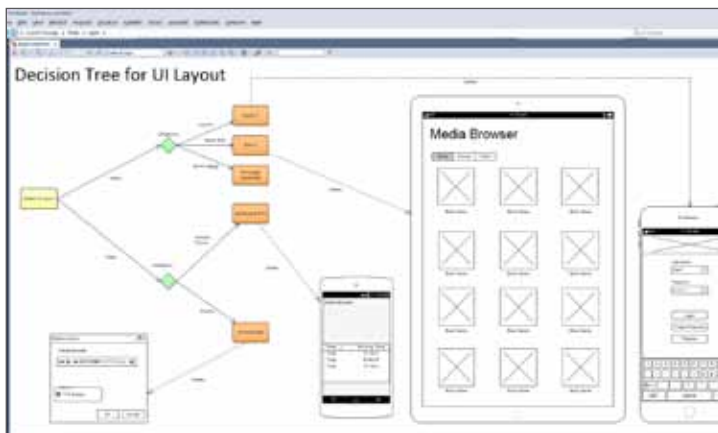
The 30 Day Trial of Enterprise Architect is fully-functional & completely free of charge.

# ✓ From Concept To Deployment

## Shared Architectural Vision

Enterprise Architect is an award winning visual platform for designing and constructing Software, Business and Real Time systems. Enterprise Architect is ideally suited for describing the structure of an enterprise, with support for leading architecture frameworks including TOGAF, DoDAF, MoDAF, UPDM and Zachman Framework. Create a shared vision of the enterprise using a team based, collaborative modeling tool.

Describe organizational structure and management controls, develop strategic models, compare changes to established baselines, visualize hardware deployment, optimize business processes and much more using a single tool.



## About Sparx Systems

Sparx Systems specializes in high performance and scalable visual modeling tools for the planning, design and construction of software intensive systems.

With customers in industries ranging from aerospace and automotive engineering to finance, defense, government, entertainment and telecommunications, Sparx Systems is a leading vendor of innovative solutions based on the Unified Modeling Language (UML) and its related specifications. A Contributing Member of the Object Management Group (OMG), Sparx Systems is committed to realizing the potential of model-driven development based on open standards.

The company's flagship product, Enterprise Architect, has received numerous accolades since its commercial release in August, 2000. Now at version 12.1, Enterprise Architect is the design tool of choice for 380,000+ registered users world-wide.

## Enterprise Architect

**Suite Editions** (Includes selected MDG Extensions)

Ultimate	\$ 699	The complete Enterprise Architect experience across multiple domains.
Systems Engineering	\$ 599	For systems engineering, real-time and embedded development.
Business & Software Engineering	\$ 599	For business modeling, architecture, development and more.
Corporate	\$ 239	Supports large, collaborating teams with security and remote DBMS access.
Professional	\$ 199	Full featured UML modeling for workgroups, analysts and developers.
Desktop	\$ 135	Comprehensive UML modeling tool for individual analysts.
EA Reader	\$ 0	A free, read-only viewer for Enterprise Architect models allowing your entire team and customers to view and understand the progress of your projects.
Visual Studio & Eclipse Intergration	\$ 145	MDG Integration and Enterprise Architect bring the best of UML 2.3 to your favorite IDE.
Distributed Data Services (DDS) Technology	\$ 205	A powerful, low cost design environment for creating complex data-centric publish subscribe services for real time and embedded applications.
TOGAF Technology	\$ 145	Align business and IT systems with strategic enterprise goals.
UPDM Technology	\$ 145	Enables practitioners to create models using the Department of Defense and Ministry of Defence architectural frameworks.
Zachman Framework Technology	\$ 145	Known for a solid history of helping enterprises collate, organize and structure their intellectual capital.
SysML Technology	\$ 105	A powerful, domain specific modelling solution for Systems Engineering.
Visual Studio & Eclipse Link	\$ 105	A flexible interface for controlling the import and export of code.
DOORS Link	\$ 105	Direct traceability of requirements data to Enterprise Architect system models.
BPSim Execution Engine	\$ 199	Direct traceability of requirements data to Enterprise Architect system models.

All prices in US Dollars

Prices accurate as of May 2016  
\* Floating license prices available on request

The 30 Day Trial of Enterprise Architect is fully-functional and completely free of charge.

**SPARX**  
SYSTEMS

[www.sparxsystems.com](http://www.sparxsystems.com)