

Migrate and Synchronize MSOffice to Enterprise Architect

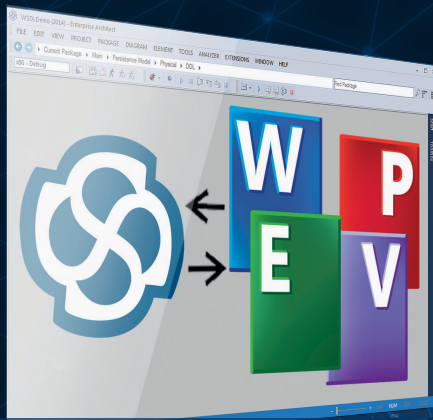


Do you want to seamlessly integrate between Microsoft Office and Enterprise Architect?

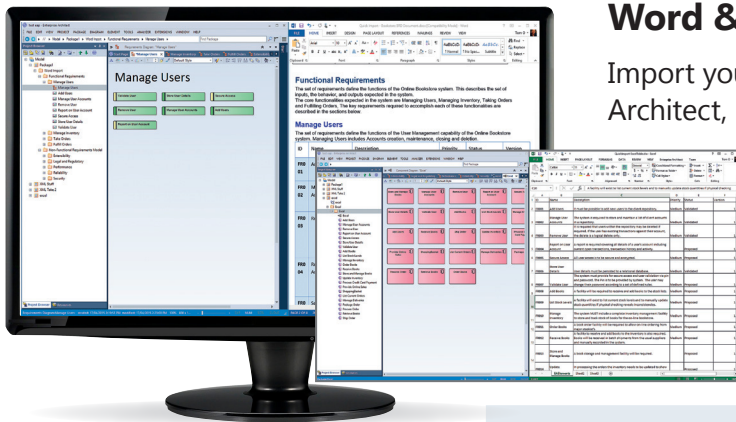
Now you can!

The MDG Integration for Microsoft Office seamlessly integrates with the Microsoft Office and Visio Suites, capturing the information authored in Word & Excel documents as model elements, within Enterprise Architect.

- ✓ Import Requirements, Use Cases and more from Word and Excel documents.
- ✓ Migrate existing Requirements and Use Cases into Enterprise Architect as Modelling Elements.
- ✓ Share and exchange model information from legacy office tools.
- ✓ Synchronize Excel and PowerPoint documents to reflect model changes.
- ✓ Leverage the benefits of traceability and impact analysis.
- ✓ Easily import Visio Diagrams into Enterprise Architect.
- ✓ Migrate from Visio to Enterprise Architect to better utilize existing data across the enterprise.



Migrate and Synchronize MSOffice to Enterprise Architect

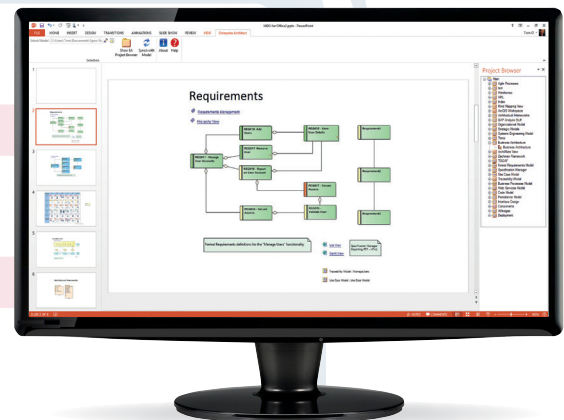


Word & Excel

Import your documents and spreadsheets into Enterprise Architect, providing a rich modeling experience utilizing UML 2.5, SysML, BPMN and a broad array of other technologies. Import Requirements, Use Cases and other project information into an Enterprise Architect repository. Synchronize subsequent changes in Word and Excel documents.

PowerPoint

The power of the Office Integration allows practitioners to publish the model contents to PowerPoint presentations. Now you can utilize your model directly within a PowerPoint presentation and ensure that your presentation is always up-to-date with the latest changes to your model.



Visio

Office Integration can also import Visio diagrams into your Enterprise Architect model, helping to support data re-use, traceability, project management, software engineering, simulation, validation and much more.

